

Issue No. 248

Hill & Valley

THE PARISH MAGAZINE OF HURSTBOURNE PRIORS, LONGPARISH, ST MARY BOURNE & WOODCOTT

50p

May 2021



Dear Friends,

I write this at the beginning of April, whilst lambing with Dinah Nabarro at Bere Mill Farm. I spent years lambing through my teens, so it's been a real joy to re-acquaint myself with ewes and their lambs... even if my body feels every month of the (more than) 20 years which have passed since I last lambed!

I love being up with the sunrise, and I love bringing new life into the world; assisting ewes with delivering their lambs when it's not going smoothly, making sure the ewes and their lambs bond well, and helping out with the basic requirements for life when the ewes are either too exhausted, or seem a bit clueless.



The first photo shows a wonderful mum licking her brand-new lambs dry, whilst encouraging them to their feet so they are able to take their first feed.



The second photo shows a beautiful set of triplets waking up on a cold morning.

Whilst walking the fields, observing the ewes and lambs for signs of difficulties, I've spent time reflecting on Jesus' humility, as well as on one of the many Christian paradoxes: Jesus our Good Shepherd and Jesus the Lamb of God.

On the one hand, Jesus is our Good Shepherd who leads us beside quiet waters; He restores our souls, guides us, comforts us and provides for us. Yet on the other hand, Jesus also *becomes* the lamb. What an amazing truth to ponder - our great and chief shepherd humbling himself to become the sacrificial lamb.

Shepherding is tiring, messy and smelly work, which keeps you in the cold for long hours. And shepherding wouldn't have been a very glamorous job in 1st century Palestine either. In those times, shepherds were generally uneducated, and lived *in* the fields with their flock to protect them from wild animals. Isn't it awesome that Jesus identifies himself with the humble, hard-working, tired and smelly shepherd? I certainly think so.

With best wishes from

Nicky

Rev. Nicky Smallwood
Assistant Curate

Services in the Parish Churches

May 2021

Our churches are open for services. **But the times may be different from previous years, so please check.**

Because of the need for safety for all in our Benefice, each week we will have an 11.00am Zoom service - see * below. If you are in a vulnerable category or are unsure, please stay safe, stay at home and come to Zoom, at least for a little while. All Zoom details (incl. the link) are available from the Church wardens or Dodie Marsden.

May 2nd - Easter 5

St Andrew's, Hurstbourne Priors	11.00am	<i>Family Communion</i>
St Nicholas', Longparish	9.30am	<i>Morning Prayer</i>
St Peter's, St Mary Bourne	9.30am	<i>Family Communion</i>
St James', Woodcott	no service	

*** home Zoom service at 11.00am**

May 9th - Easter 6

St Andrew's, Hurstbourne Priors	6.00pm	<i>Evensong</i>
St Nicholas', Longparish	9.30am	<i>Holy Communion</i>
St Peter's, St Mary Bourne	9.30am	<i>Family Service</i>
St James', Woodcott	9.30am	<i>Holy Communion</i>

*** home Zoom service at 11.00am**

May 13th, Thursday - Ascension Day

7.00pm - Zoom Service

May 16th - Easter 7

St Andrew's, Hurstbourne Priors	11.00am	<i>Holy Communion</i>
St Nicholas', Longparish	9.30am	<i>Morning prayer</i>
St Peter's, St Mary Bourne	9.30am	<i>Family Communion</i>
St James', Woodcott	no service	

*** home Zoom service at 11.00am**

4.00pm All Hallows reflective service

May 23rd - Pentecost

St Andrew's, Hurstbourne Priors	9.30am	<i>Holy Communion</i>
St Nicholas', Longparish	11.00am	<i>Holy Communion</i>
St Peter's, St Mary Bourne	11.00am	<i>Holy Communion</i>
	6.00pm	<i>Evensong</i>
St James', Woodcott	9.30am	<i>Matins</i>

*** home Zoom service at 11.00am**

May 30th - Trinity Sunday

St Andrew's, Hurstbourne Priors	11.00am	<i>All age Family Worship</i>
St Nicholas', Longparish	9.30am	<i>Morning Prayer</i>
St Peter's, St Mary Bourne	9.30am	<i>Family Communion</i>
St James', Woodcott	no service	

*** home Zoom service at 11.00am**

7.00pm - Churches Together at Whitchurch Baptist Church

Again please note that from April all four churches will have services at 9.30am or 11.00am and there will be Evensong fortnightly at 6.00pm in the Benefice.

Benefice Contacts during the interregnum period:

For all enquiries about Baptisms, Weddings, Funerals in any of the parish churches, please contact Karen in the Benefice Office
☎ 01264 738 308 or email: office.brightwaters@btinternet.com

If you wish to contact the Revd Canon Dodie Marsden, please call ☎ 01264 738 211 or email: dodie.marsden@gmail.com

If you are unable to contact Dodie, in an emergency, please call ☎ 01264 720 215 or ☎ 01264 738 489

● For details of **Roman Catholic Services** in Whitchurch or Andover ☎ 01264 352829

● **Methodist Minister** for our parishes: The Revd Rachel Borgars, 11 Lapwing Rise, Whitchurch, RG28 7SU ☎ 01256 895878 or email: rachel.borgars@methodist.org.uk

From the Church Registers

Funerals

"Into God's loving care we commit you ..."

Saturday 3rd April - St Mary Bourne

Dennis Wells

Burial of Ashes in St Peter's churchyard

Wednesday 21st April - St Mary Bourne

Phyllis Philips

Burial in St Peter's churchyard

Wednesday 21st April

Hilda Wilson

Cremation at Andover Crematorium

Tuesday 27th April

Marjory Mills

Cremation at Andover Crematorium



Esseborne Manor Hotel & Restaurant

Family run business offering a warm welcome and the best food in the area.

Daily lunches with canapes & wine

A la carte dinners

7-course tasting dinners

Sunday lunches

Vintage afternoon teas

Perfect for private functions & weddings

Hurstbourne Tarrant SP11 0ER,
www.esseborne-manor.co.uk, 01264 736 444



"Snowdrops"

5* Bed and Breakfast
- a haven of
tranquillity in Stoke

Beautiful gardens,
home-made preserves
and afternoon tea in
the Swedish Log Cabin

Ring 01264 **738920** to book
your accommodation or email:

gardenend@btinternet.com

TW GLAZING & WINDOW REPAIRS

01264 782 211/ 077 652 60922

www.twglazingandwindowrepairs.com

misted double-glazed units
cat-flaps into UPVC and glass
glass repairs into all existing frames
hinges, handles, locks and gaskets
greenhouse glass and faceputtying
FREE QUOTES AND ADVICE

G&S Lark Tree Services

Andover (01264) 874 464

Amesbury (01980) 670 226

Mobile 07850 849 960

Tree Care ~ Firewood ~ Hedge cutting

graemelark@outlook.com
www.larktreeservices.co.uk



MARH
fuels



Oil



Gas



Coal

01635 253253

AS WAITE & SON LLP

PLUMBING & HEATING ENGINEERS

- Heating Systems
- Bathroom design & installation
- Unvented pressurised systems
- Underfloor heating
- Oil boiler specialists;
service, maintenance &
installation

Whitchurch (01256) 893845
Darrell Mobile: 07884 481490
Tony Mobile: 07831 366188

GILL RHODES WEALTH MANAGEMENT

WEALTH MANAGEMENT CONSULTANTS



A wealth of expertise on your doorstep

We provide an experienced wealth management service
and offer specialist advice in a wide range of areas including:

- Investment planning
- Retirement planning
- Inheritance Tax planning

For further details contact Gill Rhodes on:

Tel: 01264 362282

Email: gill.rhodes@sjpp.co.uk
Website: www.gillrhodeswm.co.uk

Are you mulching
your garden
this year?

Apsley Farms Mulch Soil Improver

01264 554433 -
www.apsleyfarms.co.uk

Free local delivery - From £50 per 730L bulk bag



Longparish Parish Council

Report from Meeting Held on 20 April 2021

Minutes of previous meetings are available on the current or archived Longparish website (longparish.org.uk). A brief PC meeting followed the Annual Parish Meeting. There were no planning applications to be considered.

Plough Inn – update from Committee

The Plough Inn Committee met on 19 April, and the chair of the Committee reported that approval had been given for various alterations to take place at the property. It was agreed that LCPL should proceed with their plans to formalise the route of the footpath with Hampshire County Council. Councillor Peter Hull has been appointed as the PC representative on the LCPL Management Committee. The continuation of the Committee will be reviewed at the May meeting.

Playground

The Parish Council is exploring the installation of a table tennis table hopefully for early summer.

Hampshire County Councillor Andrew Gibson

Councillor Gibson is retiring from his post at the elections in May. The Parish Council thanks him for his support and advice over his tenure and wish him well for the future.

Next Parish Council Meeting

The next Parish Council meeting, will be held at 1930 hours on **Wednesday 5 May**. This will be held via Zoom, in what is hoped to be our last online PC meeting, and we will be returning to our usual slot on the second Monday evening of the month from June. Parish Council meetings are public, and parishioners are also welcome to speak on specific agenda items by prior arrangement with the Clerk (email: clerk@longparish.org.uk).

Annual Parish Meeting – 20 April 2021

The Annual Parish Meeting (APM) was held via Zoom on 20th April. The Chair of the PC presented her report, accompanied by a specially prepared slide show of maps and photographs. Reports from the Chair of the Finance Working Party, and the Chair of Open Spaces and Footpaths Working Party were also presented. Other contributors included representatives from the Village Hall Committee, Longparish Community Association, Longparish School, Longparish Little School, and Longparish Cricket Club. It was satisfying to hear that, despite the challenges of the pandemic, all groups had had a very active and successful year, and everyone was extremely grateful for the contributions made by organisers and volunteers, many of whom were given a personal mention, allowing the community of Longparish to continue to thrive. All reports will be available to read as part of the Annual Parish Meeting Minutes, to be published shortly.

All villagers are encouraged to take advantage of the opportunity of the APM once a year to discuss community issues in a broader forum. Minutes from the meeting and the details of individual reports will be available on the Longparish website after the May meeting of the Parish Council.

LONGPARISH PLAYGROUND

–have fun and park safely!

The popularity of our wonderful playground has created some concerns regarding parking. This facility is for everyone (residents and non-residents) and has been largely funded by grants from Test Valley Borough Council. However, we politely ask that all users act responsibly and with consideration for others, particularly with regards to parking and observing social distancing during the pandemic. If the playground is busy when you arrive, please limit your visit to 45 minutes, to ensure that everyone can play safely.

There is no designated parking at the playground, so wherever possible, please walk or cycle - there is a lovely footpath (aka the Spinal Path) that runs from the Village Hall car park, through the football field, all the way to the allotments opposite the playground entrance – perfect for a sunny day!

If you must drive, please do not park at the allotment entrance. Access is needed at all times for the allotments and the adjacent field. You can park beyond the second playground gate along the straight stretch of road, but please avoid parking on the bend and do not park on both sides of the road as this impedes visibility for other road users. We politely ask all drivers to slow down and drive slowly past the playground. The maximum speed limit for the whole village is 30mph.

The Parish Council has contacted Hampshire County Council and the local police for advice, and it would be useful to build up a picture of busier periods. If you notice dangerous parking, please do not challenge playground users, but do let the PC know the date and time so that we can keep a record which will help us to find ways to manage traffic in this area. Thank you for your co-operation.

Sally Lawman, Parish Clerk

Tel: 01264 738716

Email: clerk@longparish.org.uk

Planning Application 21/00812/CMAN for a permanent ancillary storage area at A303 Recycling Facility, Barton Stacey

The Parish Council has submitted a robust objection to this application, following consideration at a Planning Committee meeting held on 29 March (Minutes for this meeting can be found here: <http://www.longparish.org.uk/parish-council/pc-minutes/planning-committee-tofr-and-minutes/1741-planning-committee-minutes-29-march-2021.html>).

Although the public consultation period has technically ended, we have been advised that HCC will continue to receive and take into consideration any comments submitted to them until a decision has been made. The Parish Council has been advised that there will be a planning hearing for this application, and the Parish Council can make representation at this meeting (date not yet known).

Details of the application may be found here:

<https://planning.hants.gov.uk/ApplicationDetails.aspx?RecNo=21680>

CLACY'S GARAGE

London Street, Whitchurch
01256 892099 or 892168
Email wayne.clacy@hotmail.co.uk
Service and Repairs to All Cars
& Light Commercials

Both Diesel and Petrol
Welding and Bodywork



**BREAKDOWN &
ACCIDENT
RECOVERY
CAR HIRE AND LOAN**

Cars & Light Commercials & Motorbikes -
Diesels, Petrol & Catalysts Tested

Matt Townsend Landscaping and Fencing Call 07825710750

*Over 15 years' experience
Fully Qualified and Insured*

www.matttownsendlandscapingandfencing.com

Landscaping
Fencing
Patios
Turfing
Decking
Concrete Bases

BARSU GrassWorks

Garden Maintenance

Grass Cutting
Lawn Treatment
Small Hedge Cutting

For Competitive Rates call

Barry

☎ **01264 393803**

Mobile: 07876 178865

or email:

barsu79@ntlworld.com



MOSAÏQUE
EASTFIELD HOUSE

BOOK ONLINE NOW, visit:
www.mosaiquebeauty.com



Relax in beautiful Longparish!

Mosaïque Beauty & Image

Eastfield House,
Forton, Longparish
SP11 6NN

T: 01264 720 797

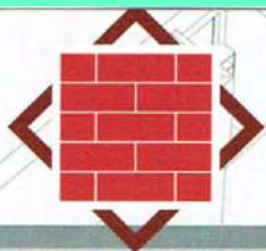
M: 07785 268 186

E: bp@mosaiquebeauty.com

W: www.mosaiquebeauty.com

Treatments Include:

- Organic & Specialist Facials
- Eye treatments
- Manicure & Pedicure
- Gel Polish
- Lycon Gentle Precision Waxing
- Spa Treatments & Lava Shells
- The Dorn Method
- Jane Iredale Mineral Make-up
- Colour & Style Analysis



Hayward Brick and Flint

Restoration, Alterations, New build

Adrian Hayward
Bricklaying And Flintwork Contractor

Groundworks, Fencing,
Patios, Chimney Rebuild
Landscaping, Drives
Drainage, Damp proofing,

10 Hirst Copse
St Mary Bourne
Andover
SP11 6ST

tel **07833691542**
jinxzoolander@hotmail.co.uk



RIBA
Chartered Practice

MATHEWSON WATERS ARCHITECTS

WHITCHURCH 07540 726562 www.mw-architects.co.uk





Longparish CE Primary School

A very warm welcome back after the Easter holidays. And what a wonderful start to the summer term it has been,

we have been so blessed with the weather. It has been a joy to have the children back in school and for me to meet them all and start to get to know them. They are an incredible group of children and I am really looking forward to being with them over the coming months and beyond.

I feel proud and honoured to introduce myself as the new Headteacher of Longparish Church of England Primary School. My teaching career spans over 25 years across London and the South of England, particularly in the primary phase. I settled in Winchester 14 years ago and taught in a selection of more contrasting schools including a medium size school on the outskirts of Winchester and small village schools. During this time, I was Deputy Headteacher for 5 years, partly as an interim Headteacher.

My post at Longparish will be my first fulltime Headship and I can think of no better place to begin this next stage in my career. Already, I have been extremely impressed by the attitudes and behaviours of the children. The school values are obviously well embedded here and it has been wonderful to see the love, friendship and excellence play out as I visit the classrooms and circulate around the school.

I believe a strong partnership between parents and the school is extremely important to enable children to achieve their very best. I am very much looking forward to working with the whole school community at Longparish and by listening to both pupils and parents, to continue to build on the wonderful strengths of the school already established by Trudie Cawthra and the current team.



With my very best wishes to you all. Stay safe,

Mrs Nicky White,
Headteacher

FoLS 100 Club Winners

- 1st - Sid Bryant
- 2nd - Angus Dawson
- 3rd - Penny Billingham



Easter Fun - Although it has been a challenging time for fundraising we've been so lucky to run some fun events for the children.

Virtual Duck Race – On the 3rd of April 100 ducks went floating down the river. We were able to live stream it on the school Facebook page for everyone to watch and although you couldn't be there, hopefully you were still cheering on your duck from the comfort of your home! Congratulations to Zowic who had the winning duck and thank you so much to Mr & Mrs Palmer for allowing us to launch the ducks from their beautiful garden.



Egg Decorating & Easter Bonnet Competition – As part of the Easter week of celebrations at school Fols ran some competitions for the children to try and win an egg in time for the holidays. There were some wonderful entries and it was fantastic to see so many children in the bonnet parade.



Longparish Little School

Everyone at Little School was very excited about our outside area refurbishment undertaken over the Easter holiday. We would like to thank everyone in the local community for supporting our fundraising events for this, especially Longparish Community Association for their generous donation and to Collard for the donation of a skip.



We now have some lovely new artificial grass and a new nature area to help compliment our exciting Forest School. We will be busy this term making bug hotels, bird feeders and planting flowers to attract the bees and butterflies.

The next part of our project is to build planters to grow our own vegetables. To support please donate here <https://www.crowdfunder.co.uk/summer-term-fundraising>.

We are now taking applications for September 2022. For info please contact Claire at claire@longparishlittleschool.org.uk or phone 01264 720455 or find out more from our website <https://www.longparishlittleschool.org.uk/>



GroundLord

THE PROFESSIONAL
ARBORISTS YOU CAN TRUST

TREE SURGERY | SITE CLEARANCE
ECOLOGY WORKS | FORESTRY

01256 212908
www.groundlord.com



TUCKER

Kitchens, Furniture & Joinery

Est: 1976

Unit 9 Towergate Industrial Park
Colebrook Way, Andover, Hants, SP10 3BB
t: 01264 365113 www.tuckerjoinery.co.uk



SW WINDOWS

Window Cleaning



Interior & exterior windows
Gutters, fascias & soffits
Conservatory roofs
Solar panels
Cladding

07968 524874
swwindowssrm@gmail.com

CLEAN OVENS

DOMESTICS LTD

• AGAS • HOBS • OVENS • RANGES
• EXTRACTORS • BBQS • MICROWAVES

*Eco-friendly materials used - Experienced staff
Covering Hampshire & Wiltshire*

Call or email Dave
tel: 0800 707 6629 mob: 07563 693145
email: cleanovensdomestic@gmail.com

M.J. SLY

MONUMENTAL SCULPTOR

Andover Memorial Studio
6 Swan Court,
Andover, Hampshire.
SP10 1EZ
Open by appointment only

QUALITY MEMORIALS AT
WORKSHOP PRICES FREE
BROCHURE

Choose a NAMM Member
www.mjsly.co.uk

email: info@mjsly.co.uk

Telephone 01672 516797
Pelham Court, Malborough



Mobile knife, scissor & tool sharpening services

No call out charge

Call Becky on **07393 600630** to book a visit
More details can be found on

www.onpoint-sharpening.co.uk

To Advertise in this Magazine contact: Mr Michael Widén 01264 738250



Progress at The Plough

Longparish Community Pub Ltd

Many thanks to all the local people, shareholders and friends of The Plough who came together in mid-April for a Zoom call to find out what's been going on at the pub. More than seventy people were there to hear an update from the committee, ask questions and make suggestions. We are planning another meeting this month and details will be published on our website and around the village, as before.

The refurbishment is coming along well and is on target to open this summer. Every weekend a team of volunteers has been working either in the garden or inside the pub. The preliminary tree works are well underway under the expert guidance of Paul Knipe, whilst being very careful not to disturb nesting birds. Half of the new fence is now up and inside the bar and washroom facilities are being remodelled to make The Plough fully accessible.

The upstairs accommodation (manager's apartment) is being cleaned and prepared for decoration; the kitchen cleaned and ready for new equipment; the building's electrics are being sorted and the premise licence is now in place. Work is now well underway to create branding for the pub – a new pub sign, menus and other pub stationery.

The hunt is now on to find staff to run The Plough. Committee chairman Andy Jolliffe says: "We need to find someone with the skills, experience and passion to help us build both a thriving community hub for locals and a high-quality rural destination pub. The manager role comes with a very competitive salary including a newly re-furnished two-bedroom apartment at the heart of a wonderful village. We would love to hear from anyone who thinks they fit the role."

We've made great progress, but there's still lots to do. Currently we are focusing on:

- Decorating manager's accommodation & community rooms
- Outdoor grounds - tidying and preparation works
- Toilet area – ongoing works with refitting
- Bar area – various ongoing works

The pub will be open for volunteer work on:

Thursdays 2pm to 7pm
Fridays 2pm to 7pm
Saturdays 10-1pm and 1.30-4pm
Sundays 10-1pm

If you are able to help even for an hour, please just turn up. Alternatively, you can email volunteer@lcpl.org.uk or call 720069 and leave a message.

To find out more about the manager's role please email: careers@lcpl.org.uk.

For general information please visit ploughinn.org



The Cricketers Inn

Telephone 01264 720424 Email

thecricketerslongparish@gmail.com

Hello everybody. As you all know we opened in an outdoor capacity on Monday 12th April.

It has been an absolute joy to see you all again and I can't thank you enough for all of your continued support, and compliments on our food, drinks and service. We look forward to reopening the inside of the pub on the 17th of May.

We finally managed to get the pizza oven in situ and have been practising our pizza making skills!

Here are our opening hours:

Monday, Tuesday, Wednesday and Thursday

11.30 am – 3pm & 6pm – 11pm

Friday, Saturday and Sunday

11.30 am – 11pm

Food served everyday 12pm – 2.30pm & 6pm – 8.30pm

Tea, coffee and homemade cakes are always available. Our wood fired pizza oven will operate Saturday and Sunday between 2.30pm and 6.30pm for eat in or takeaway.

We are still operating a takeaway service for food and drinks, please call or email with your order and a pick up time.

Once again, thank you all for your support –

Matt, Jack, Pauline and the team



LONGPARISH CRICKET CLUB



Club members are delighted that the outdoor season has started and weather permitting a full programme can be completed. All fixtures are on the website, anyone welcome to come along, watch and enjoy a cuppa, Covid-19 permitting.

New practice nets will be available from end of May, which will enhance our facilities. Lots of work has also been done to the pavilion and ground.

Fundraising is an ongoing challenge. Please contact: committee@longparish.co.uk for more information on how you can help support or sponsorship.

For more information visit: <https://longparishcc.hitscricket.com> or follow the club on Facebook or Instagram.

Mark Benzing, Chairman and Treasurer

No, Not That Pandemic

Just as we breathe a sigh of relief that the Covid-19 pandemic may be coming to an end, another looms on the horizon as the tick-borne bacterial illness **Lyme disease** reaches global pandemic proportions – but is that the case?

Lyme disease is a disease of **northern temperate** forest edges and about 200 times more prevalent in parts of central and eastern Europe than in the UK. Southern England, Thetford Forest and the Scottish Highlands are the main hotspots. It has not been found in the southern hemisphere although some Australians may disagree.

Just over 1000 cases of Lyme are confirmed each year at Porton Down, but it is estimated that GPs treat about another 2000 cases. So, Lyme has certainly **increased in the UK** in recent decades but nowhere near to pandemic levels. This increase is blamed on climate change, new housing developments affecting tick habitats and rising deer populations.

There are several **life stages of the tick: larva, nymph and adult**. An engorged adult is about the size of a coffee bean and easily identified on the body, but it is very hard to find the nymphs which are the size of a freckle and can be anywhere, under the hairline or in skin creases. These are the main culprits in **Lyme transmission**. They acquire bacteria from earlier blood feeds on small mammals and pass it on in their next feed.

Prevention is key. Be tick aware. Do tick checks after walks in long vegetation and remove with fine tweezers or dog tick levers, not cigarettes or noxious fluids. In my experience, it does not matter if you leave a bit of the mouthpiece in situ as it will come



out like a splinter in due course. Only about 2-8% of ticks transmit infection. The first symptom, after 1-2 weeks, is an expanding **red rash** at the site of the bite (described as a bulls-eye rash) but

they can be all shapes and sizes, especially in funny places. The rash may be accompanied by 'summer flu' symptoms – mild fever, aches and pains. If you see a spreading rash, take a photo and show your doctor. Treatment is with **antibiotics**.

Lyme disease occasionally progresses to neurological Lyme which can cause arthritis but is rarely seen in Europe. **Neurological Lyme**, or neuroborreliosis, is a secondary manifestation presenting most commonly as facial palsy, but also pains and weakness affecting segments or dermatomes of the body. Neurological Lyme is also readily treated with antibiotics.

Diagnosis should be by your GP; online tests should be avoided as they are not validated.

In the US, Lyme has generated a remarkable social phenomenon known as '**Chronic Lyme**' – particularly favoured by celebrities – as people with chronic fatigue syndrome or myalgic encephalomyelitis (ME) cannot get their healthcare costs covered by insurance unless their symptoms are diagnosed as Lyme disease!

Back in the Hill and Valley area, we are in a tick hotspot so need to be alert. **Enjoy the countryside but watch out for ticks.** Remove them if they bite and if you think you have Lyme, see your GP. There is Lyme disease about, but a new pandemic? I don't think so.

Matthew Dryden

Annual Parochial Church Meeting St Nicholas Church

The Annual Parochial Church Meeting took place on 28 April by Zoom, chaired by the Area Dean, Rev David Roche. John Young announced that he was standing down as church warden after 20 years and gratitude was expressed for all he has done for the church and in the village during that time. He said he was willing to remain as a PCC member.

Peter Jones had agreed to stand for election as church warden and Georgi Leask agreed to continue. They were both formally elected and Peter was warmly welcomed to this role. The following were re-elected to serve for three years on the PCC: Graeme Francis, Jane Young and John Young, and Gemma Doughty Jones was elected for the first time. (A full list is available on the church pages of the Longparish website.

The Financial Report and Accounts and the Annual Report of activities were approved and thanks were expressed to Huw Morrison for all his work as treasurer, and also to Patrick Beresford for examining the accounts.

Jane Young
PCC Secretary

BIRDS OF LONGPARISH BY CHRIS BOWMAN

REED BUNTING



A Reed Bunting has been coming to my feeders; if it comes to mine in the afternoon it must visit other feeders as well. I had a different one last winter. How can I tell? Last year's fed on the feeders this year it feeds beneath them.

Reed Buntings are about the same size as a House Sparrow. The male has a black head and throat with a white collar, pale buff beneath and brown-black on its back. The tail is the same with white sides. Breeding starts in May, 1-2 broods. The nest is usually well hidden on seed tussocks, dead rushes and reeds, always by water. Its a foundation of stems and blades of sedge grasses occasionally small twigs, lined with finer plant material, moss and hair. Four-five eggs which are very pale purple, lilac grey or brown-olive, with greenish scrawls and blotches of purple-black at the larger end. Incubate for 13 days and fledge in 10-12 days. On my feeders it's sunflower hearts but in the wild they feed on seeds and plant material, invertebrates in the breeding season.

I know a lot of you enjoy feeding the birds - feeders should be cleaned at least once a month. I have seen two Chaffinches this year with a parasite called Trichomonas which affects the throat and gullet making it hard to swallow and eventually they will die.

I saw my first Swallow on the 30th March: 7 days earlier than last year. My first House Martin was on the 7th April: 1 day later than last year.



LCA - L2SOTM - The Longparish Second Sunday of the Month handicap race

There are lots of runners in Longparish. The L2SOTM five kilometre handicap race gives all of us a chance for a light hearted race once a month. This is an excellent way to monitor your fitness.

We'll be back on 9 May with the 164th edition of the race if Covid relaxations go according to plan. You will be very welcome if you'd like to run or help out. Your start time depends on how fast you are. For your first race it will be based on your estimated time. After that your handicap will be based on your most recent result. Slower runners will start first with the fastest last so the winner is the person who improves most.

Runners must enter in advance and numbers are limited. There will be Covid rules to ensure the safety of runners and volunteers.

We issue a monthly email invitation a few days before each race and very occasional other emails. Please follow this link <https://tinyurl.com/yygolzdb> to be added to our Mail Chimp list. Some email systems may treat your first email as spam so please look out for it and add us to your trusted list.

There's more information on the village website <http://archive.longparish.org.uk/l2sotm/> or please feel free to give me a ring. Jeremy Barber tel 01264 720459

FRIDAY LUNCH CLUB

Starting up again following strict Covid Govt guidelines

Friday 21st May

12.00 - 2.00pm in Longparish Village Hall

A simple lunch of soup and cake on the last Friday of the month £3.

Booking is essential as numbers will be limited.
A mask will be needed for transport and for walking into the hall.

On the day please do not attend if you have any symptoms that could be Covid 19

For booking and/or transport call Andrea Harris
720 457 Christian Dryden 720 398

Contact details will be kept for 21 days and if the situation changes the Lunch Club maybe cancelled at short notice.

Longparish Community Support Group

Lifts can still be arranged to the vaccination centres if needed. Please call 07765 467 006 or email

covidhelp@longparish.org.uk



GARDENING



LONGPARISH GARDENING CLUB

The Longparish Gardening Club will not be meeting this month but we will be having our first visit in June to Hardy's Cottage Garden Plants, Freefolk Priors, Whitchurch

In the meantime, please do look at the **NGS website** as there are several gardens open now to visit including some of our local favourites i.e. Bere Mill, Whitchurch. Little Court, Crawley and Ampot & Monxton Gardens at the end of May..

The Longparish Gardening Club meets on the 4th Tuesday of most months of the year and members are welcomed from within our combined Parishes of Longparish, Hurstbourne Priors, St. Mary Bourne and Woodmancot.

Any queries please to :

Rosie Lowry 720325 rosie@vewcottageparish.com
or **Marion Bell** 720205

PLANT STALL

Reminding all you greenfingers out there, don't forget to sow a few extra seeds for the Plant Stall.

The plant table at Tudor Cottage will make a reappearance in May on behalf of Longparish School.

If you are lifting or dividing any plants or have an excess of seeds sown please consider a donation to the plant table.

Thanks

Sylvia Crook, 07776 303428



Donna, Ingrid and Jo of Longparish, are all keen weekly social runners who have taken on the challenge to run 50 miles each throughout April to raise money for Prostate Cancer. We aim to run 4 miles, 3 times a week. A recent run took us into unknown territory, new footpaths around the village and a local monument – we are ahead of our game completing 7.5 miles!

To date we have completed just over 120 miles between us with 8 days left. A great effort and dedication by the team for a great cause. If you would like to donate to our page please follow this link <https://runthemoth.prostatecanceruk.org/fundraising/running-girls2021>

P.J.ROPER

Traditional Builders

Traditional Building & Period Property Specialists

CONTACT:

Office - 01256 892993

Mobile: 07770 368176

kathleenroper@btinternet.com

Richard Steel & Partners

The Family Owned Funeral Directors

(Serving Hampshire since 1860)

Alderman House, 12-14 City Road, Winchester

☎ (01962) 862333

www.steelsfunerals.co.uk

BELVEDERE TRAVEL



Catered gulet holidays in Turkey

www.belvederetravel.com

email info@janeblount.co.uk

01264 738533 and 07884003082

BOURNE Again Feet

Hilary Steeden MGFHP MAFHP

Foot Health Practitioner

Tel: 01264 738 554

Mob. 07787 703 900



. Problem Nails . Verrucas

. Corns . Cracked Heels

. Hard Skin . Fungal Infections



BINLEY HOUSE FARM B&B

Bed & Breakfast
in the quiet hamlet of Binley
in the Hampshire countryside
near the charming village of
St Mary Bourne. En-suite
bedrooms, full English or
continental breakfast and a
warm welcome.

Horse B&B for two horses also available. Binley House Farm is home
to champion Arabian horses. Email: binleyhousefarm@gmail.com
or ☎ 01264 738343 www.binlevstud.com

WEST JOINERY

Bespoke doors,
windows,
kitchens,
wardrobes,
bookcases.

*For all your
joinery needs*

07717 570748

Julian@uswests.co.uk



JULIAN WEST CARPENTRY
a company built on reputation

Loft Conversions . House
refurbishments
Kitchens . Bookcases . Wardrobes
General Carpentry and
construction

We pride ourselves on offering
quality service and workmanship
which enables you to see the full
potential of your property

For further details please contact
us on 01264 860392
or 07717 570748

Email: julian@uswests.co.uk

BREACH FARM WOODLAND BURIAL GROUND ST MARY BOURNE, SP11 6DQ

A beautiful woodland burial ground
overlooking the Bourne Valley

Single, Double and Ashes plots available.
Area for pets.

For further information/request a brochure:-
Mobile: 07789 888399

Email: lisa@breachfarmwoodlandburialground.co.uk
www.breachfarmwoodlandburialground.co.uk



Whitchurch Wills

FREE INITIAL
CONSULTATION

**"FRIENDLY, ACCESSIBLE
AND QUALITY SERVICE"**

YOUR LOCAL WILL WRITER FROM WHITCHURCH

• Will Writing • Review of existing Wills • Lasting Power of Attorney
• Estate Planning • Trusts • Probate Services

Clare Datta, BA(Hons) MSWW

T: 01256 896336 M: 07810 455581

E: claredatta@whitchurchwills.co.uk W: www.whitchurchwills.co.uk



ASH PILE ISSUES

December's edition of Hill and Valley highlighted the story that it was believed Raymond Brown/Fortis wanted to permanently store thousands of tons of processed bottom ash on the site of the defeated Wheelabrator incinerator. The firm had temporary permission last May to store the material at the site to tide them over as the pandemic meant a drop in sales of the product. Now they have submitted the application to HCC to make the dump permanent. If approved it will mean thousands of extra tons of processed incinerator ash (IBAA) dumped on our village doorstep indefinitely.

The Parish Council has strongly objected but few villagers knew of the proposal until it was too late to comment. However, you can still object to this controversial application.

Originally time to object had expired before most villagers knew of the application by the Raymond Brown subsidiary Fortis IBA Ltd to make the dump permanent. However, following pressure from members of the team which fought the incinerator scheme Hampshire County Council has agreed to accept your objections up to the time the final decision is made, possibly in May.

The potentially toxic nature of IBAA means that its use in construction is limited. It is used for road foundations and similar projects. Demands for IBAA had been 'strong' according to Fortis, but dipped during the Covid Pandemic.

Last May the Environment Agency allowed temporary storage of excess material on the footprint of the rejected incinerator. Later permission was extended until the end of March. A few weeks ago, an application to make the dump permanent was made to HCC's strategic Planning Department planning desk. Raymond Brown/Fortis also want to expand the site by incorporating part of the woodland strip alongside Pat's field. Dozens of semi-mature trees would be felled.

Villager Paul Knipe said "If demand for IBAA had previously been 'strong' as they say, it is bound to pick up again once Covid restrictions have been lifted. So, what is the need to make the dump permanent? In our view, none.

"The substance is dusty, creates an unpleasant odour and must be protected from leaching into the chalk aquifer contaminating spring flow, feeding the internationally famous Hampshire chalk streams"

"Another temporary extension may be permitted, but permanently destroying yet more of our beautiful countryside with this unpleasant ash is simply not acceptable."



HOW CAN YOU COMMENT OR OBJECT?

Email: planning@hants.gov.uk or write to: Strategic Planning, Economy, Transport and Environment Dept. The Castle, Winchester SO23 8UD

State that your message or letter concerns planning application 21/00812/CMAN (Ancillary Storage Area at A303 Recycling Centre)

State that you **OBJECT**, otherwise our submission will be recorded as a simple comment. Give the reason for your objection and include your full name address and postcode. Each member of the household can submit an objection. Numbers count.

Henry Yelf

LONGPARISH CHOIR - SAVE THE DATES

Song and Sun - Welcoming in summer (we hope!): Saturday 5 June 6pm, the Cricketers' pub garden.

Together Again: A joyful evening celebrating community and friendship: Fri 24 September and again on Sat 25 September 7.30pm, St Nicholas Church.

We are also looking for new members - would you like to join us? The Choir is a friendly and welcoming group of local people who just enjoy singing and having a laugh together. You don't have to audition or be able to read music or have any experience of singing. If you've been in the choir before, have thought about joining, or are totally new to the area and are looking to meet people and get involved in your new community, you are more than welcome! We are rehearsing now for the events above and a wedding in July (you do not have to commit to every performance).

Talk to any member of the choir to find out more, or contact **Cathy Yelf** 07775 683452 or by email at cathy.yelf@sky.com

LITTER FREE LONGPARISH

Thank you to everyone who helps keep Longparish beautiful by picking up litter.

Friday Litter pick Friday 13th May - meet behind Village Hall 9.15 am.

Why not join the band of regular litter pickers in Longparish by adopting a road or footpath. Who knows what you will find or what you will be given?



The Parish Council can provide litter picking sticks, hoops and bags.

Tel **Christian Dryden** 720 398



Country Oak Buildings

Specialising in:
Hand Made Oak Buildings
Garden Structures and Follies
Traditional Carpentry Techniques

Contact Nick 01962 776 217

Mobile 07919 987451

www.countryoakbuildings.co.uk

Our Treatments

McTimoney Chiropractic
Physiotherapy
Podiatry
Sports therapy
Nutrition and allergies
Bowen technique
Alexander technique
Counselling



01264 324924

36 East Street, Andover, SP10 1ES
www.chirosclinic.com



CLOCK BARN

Beautiful barn weddings

Clock Barn, Tufton Warren, Whitchurch, Hampshire, RG28 7RB

01256 630199 clockbarn-weddings.co.uk



Images by Mia Hooper Photography, Jacob & Pauline Photography and Kit Myers Photography

Tried - Tested - Trusted

We only offer the best advice and a no-pressure sales calls

KJM



Building quality since 1983...Triple Glazing Specialists



Windows, Doors, Conservatories in Hardwood, PVC and Aluminium

Mylen Business Centre, Mylen Road, Andover SP10 3HR

Tel 01264 359355 I Fax 01264 353441 I e-mail: sales@kjmgroupp.co.uk



www.kjmgroupp.co.uk - 4 x Finalists "Installer of the Year" G-Awards

WEATHER – MARCH 2021

Total rainfall for month	55mm	2.16in
It rained on	8 days	
Rainfall same month last year	104mm	4.09in
Total for 2021	265mm	10.43in
Total for 2020	381mm	15.00in
Max temp (on 30 th)	23.5C	75F
Min temp (on 8 th)	-3C	26F
Number of frosts	5	

We didn't quite make the record March temperature of 24C on the 30th – but were not far behind with 23.5C!

John Smail

THE MAY FAIR ON-LINE PLANT STALL IS BACK!



There is no May Fair this year but you can still buy plants for your gardens from our on-line plant stall!

Precelly Murray and her green-fingered team of Katherine McCullough, Tom Crutchfield and Gina Yates have a range of favourites from her usual May Fair stall and some new species for this year including:

- Scented leaf, trailing and bedding geraniums,
- Annuals such as cosmos, lobelia, sweet peas, stocks and fuchsias,
- Edibles such as strawberries, tomato plants, chillies, runner beans, courgettes, herbs,
- Perennials including penstemons, veronicas, verbenas, salvias and campanulas.

There are too many to list them all here as there are over 100 different varieties!

If you would like a full list of plants with prices and instructions on how to order and pay, please email:
hurstbournepriorsmayfair@gmail.com

The list will be available from Monday 3rd May.



HURSTBOURNE PRIORS MIDSUMMER CELEBRATION AND CHARITY AUCTION



We will be holding a Midsummer Celebration Dinner on Saturday the 26th June at 7pm. Drinks and canapés will be served in the garden at The Barn House, 50 Hurstbourne Priors, followed by a three-course set dinner with wine in the Village Hall.

This is a fundraising event in aid of St Andrew's Church, the finances of which have been severely impacted by recent lockdowns.

Dinner will be followed by an auction of prizes, which currently include tickets for two for Ascot '22 and a tandem skydive at Netheravon Airfield.

If anyone would like to donate an auction prize, which could be anything from gift cards/vouchers, home made produce, a few hours of an experienced gardener's time, or a unique and interesting experience that might tempt people to bid, we would love to hear from you. Likewise if you know of a business or organisation which would be prepared to donate a prize, that would be wonderful too.

Invitations will be sent out soon. We look forward to you joining us in what will be an entertaining and celebratory get-together to raise funds for St Andrew's Church and mark the end of lockdown.

If you have not already received an email advising you of this event, and you would like to be added to the mailing list for this and other village functions, please let us know.

Ann Orr, Denise Bradley, Lulu Beasley and Emma Ryan
 Email: MidsummerCelebrationHBP@gmail.com

LADIES' COFFEE MORNINGS

Our monthly coffee mornings will resume when restrictions change, hopefully, after the 21st June. Look out for the first date in next month's Hill and Valley!

Meanwhile, for any information or offers of hosting, please contact Susie Sorby tel. 892665 or email: sbsorby@hotmail.com



Serving the local community for over 15 years

Complete **h₂O** Services

Plumbing & Heating Engineer

OFTEC registered & Grant approved

24 hour call-out service

Registered
Oil Heating
Business



Contact 07990 897372

info@complete-h2o.co.uk

www.complete-h2o.co.uk

TEST VALLEY GARDEN MACHINERY LTD

INTRODUCTORY OFFER:

FREE COLLECTION & RETURNS

LOCAL RESTRICTIONS APPLY

— Never knowingly undercut —

Tel: 0800 107 3263

FOR ALL YOUR
REPAIRS • SALES • SERVICE

www.tvgm.uk



RAMPTON ELECTRICAL CONTRACTORS

your local professional electrician covering
all areas of Wiltshire & Hampshire

All domestic & commercial electrical
works undertaken - Bespoke Lighting Specialist

01980 734004

Michael@Ramptonelectrical.co.uk

P C BUTLER BRICKWORK

General and Traditional Building
Roofing, Maintenance & Repairs,
Painting & Decorating

No job too small

01256 781830 or 07833 586250

paulbutler3@hotmail.co.uk



We can help you meet all your pet and equine healthcare needs, with professional and caring staff who can treat your animal at a time that suits you. Our vets offer an emergency service giving you 24 hour reassurance.

...we're here to listen

OUR SURGERIES:

Burlins Surgery, Burlins,
East Woodhay, Newbury,
Berkshire, RG20 0NU.

Foxhold House Surgery,
Crookham Common, Thatcham,
Berkshire, RG19 8EL.



THE
COACHHOUSE
VETERINARY SURGEONS

www.coachhousevets.com

24 hour phoneline: 01635 254544

Robert Allnutt Building & Garden Maintenance

I am based in Longparish, my work is varied and has included Building a Bridge over a River, Bespoke fitted cupboards Shelves and bookcases, Kitchen and Bathroom makeovers, Raised garden beds, Gates and Fencing. I also make Log and Bin stores.

See me on Facebook

**Robert Allnutt Building
and Garden Maintenance**

Message or phone to quote for your
future indoor or outdoor projects

Mobile 077 33 212 809
rob.allnutt@yahoo.co.uk



FREEDOM BI-FOLDS

Bifolding and Sliding Doors – Windows - Residential Doors



Contact us today:

01264 301 302

info@freedombifolds.co.uk

Visit our showroom at Andover Down, SP11 6LJ

WHITCHURCH SILK MILL

**Roadmap Re-opening**

All being well, by the time you're reading this the Mill will have been able to open its outdoor café and will be planning to reopen the whole site on 17th May.

Help from the Culture Recovery Fund

We were delighted to have been among the recipients benefiting from the latest round of awards from the Government's Culture Recovery Fund. The Mill has been granted £50,000 to help it reopen, recover from the losses sustained since March 2020, and become more resilient by being able to invest further in weaving and community engagement. Our exciting plans include creating a special indoor and outdoor summer exhibition, developing digital engagement and building up our heritage conservation resources. The Mill Director, Sue Tapliss, says: 'The lockdown has given us the opportunity to reflect on how we can better serve our community and visitors, and this funding will enable us to survive and thrive. It will allow us the time to develop new ways of telling our story, to make improvements, and to develop our weaving team and conserve the historic machinery so we can provide an experience that will delight everyone who engages with us.'

Objects in Focus

More Objects in Focus episodes are available to view on our YouTube channel. They focus on shuttle damage and intriguing loom clues.

The shuttle is a key tool in weaving. It's a wooden object a little like a canoe and it carries the weft thread back and forth over and under the warp threads on the loom. The shuttle travels at speeds of up to thirty miles an hour, and in the past if the weaver wasn't careful it could cause serious damage when any timings in the loom misfired, causing the shuttle to fly off the end. Evidence of this can be seen in the holes on the walls in the weaving shed. Past weavers told a tale of a shuttle hitting a window with such force that it shattered and the shuttle flew out into the river. The weaver had to tuck up her skirts and go barefoot into the freezing water to retrieve it. Today there are metal mesh cages on the sides of the looms to prevent accidents, but the weavers still need to be vigilant just in case a shuttle makes a bid for freedom!

The loom clues in the Mill can be seen most clearly on the second floor, where there are black marks and indentations on the floor. The black marks were made by goose fat, which was used to grease the looms' mechanisms to keep them in working order. The fat would sometimes slide off the loom components and

congeal on the floor. The indentations were made by hand looms, which moved about a lot during the weaving process. There are also clues in the weaving shed, where white marks are visible underneath the looms. In bygone days the floorboards underneath the looms were painted white to provide better contrast to the threads on the looms and enable weavers to spot broken threads more readily. These marks still guide our weavers today.

A lot of the flooring in the Mill is still the original planks, dating back over 200 years. They've received a lot of damage and alteration in their time, but we are lucky to have been able to maintain so many of them.

Contact: info@whitchurchsilkmill.org.uk – 01256 892065 – www.whitchurchsilkmill.org.uk

HURSTBOURNE PRIORS PCC

The Annual Vestry Meeting of St Andrew's Church will be held on Zoom on Monday 24th May 2021 at 7.30pm. This is a meeting of all parishioners to elect the churchwardens for the coming year.

The Annual Parochial Church Meeting (APCM) will take place also on Zoom, immediately after the Vestry Meeting. Anyone on the Electoral Roll of St Andrew's, Hurstbourne Priors can attend and vote at the APCM.

Login in details for Zoom are available from: fenella.williams@btopenworld.com

PARISH COUNCIL MEETING

The Annual General meeting of Hurstbourne Priors Parish Council is on Wednesday, 26th May at 7.30 on Zoom. The code for joining the meeting is available from the Chairman or the Parish Clerk.

All Parishioners are very welcome to attend meetings of the Parish Council. You do not need to give any notice, however, if there is a particular item which you would like to discuss and which you feel it would be beneficial for the Councillors to look into prior to the meeting, please contact:

Richard Waterman, Parish Clerk, on richard.waterman150@btinternet.com or Clare Read, Chairman clareread@aol.com or 07711 917375.

Minutes from previous meeting are available to view on the Parish Website.

NEW MANAGER FOR THE VILLAGE WEBSITE

The Parish Council are very pleased to announce that Ed Beasley has very kindly agreed to take up the reins of the Parish Website following the departure of Graham Finlayson.

It is some time since the website was put together and, over the coming weeks, it will be updated so that village notices, Hill & Valley pages and Parish Council minutes can be more easily accessed. Please be patient whilst this process takes place.

Hurstbourne Priors PC

Count on Us Bookkeeping Ltd

Bookkeeping and Accountancy Support

07879 475005

www.coubookkeeping.uk

kath@coubookkeeping.uk



- * Confused by debits and credits?
- * Swamped with paperwork?
- * Fed up with VAT returns and other business forms?
- * Concerned about cashflow?

Then call us to talk to a friendly professional who can help give you back your time. And your sanity!

Monthly, fixed-fee packages available.
For a friendly and affordable service,
phone now for a FREE first meeting



Practice Licence: 11809

WILD ROSE

FLORAL DESIGN

Wild Rose Floral Design will look after your floral needs, weddings, sympathy, events, corporate or a beautiful bouquet delivered to your door, let us inspire you and take you on a floral journey.

07894 103953

laura@wildrosefloraldesign.co.uk

www.wildrosefloraldesign.co.uk

BURLISON Photography

MPA Photographer of the Year 2019/2020



CAA Authorised & Insured Aerial Photography & Film.
Family portraiture at home or on location.

- Wedding Photography & Film
- Instant Event Photography • Award Ceremonies, Fun Days • Golf Days • Summer Balls
- Prom Nights • Xmas Parties • Celebrations
- Commercial • Corporate • PR • Interior • Food & Drink • Lifestyle Photography
- Image Restoration • Bring the memories back to life

Contact Dave on
07771 803025



www.burlisonphotography.com



info@burlisonphotography.com



James Barnett

Quality Painting & Decorating



Advanced City & Guilds
Over 25 Years Experience
Tel: 01264394543
Mobile: 07747603710

Email: Jamesbarnett1@btinternet.com



I SEE A LINE. I CROSS IT.

BESPOKE TAILORING BY DRESS2KILL.COM

£100 off your first **DRESS 2 KILL**
Bespoke Suit



Exclusive offer for readers
of The Hill & Valley Magazine

Dress 2 Kill now at 84 High St, Andover SP10 1NE Above At Last



OVERTON
BATHROOM CENTRE LTD

[@overtonbathrooms](https://www.instagram.com/overtonbathrooms)

Telephone: 01256 770374

email:info@overtonbathrooms.co.uk

www.overtonbathrooms.co.uk

Thank you to our
loyal customers for
your continued support!

We provide over 30 years
of experience and pride
ourselves on our customer
service, product knowledge
and installation expertise

DIARY OF A WIMPY CYCLIST

One year on...



Spring has descended, slightly chillier than this time last year, but sunny nevertheless. Group rides of 6 people are now back on, and the roads are filling with cars again. But there is someone missing. It has been a year since last writing, as I lost my 68-year old cycling buddy, Dad, in June. He had a massive, unexpected, heart attack while cycling solo near

Dogmersfield, ending in a ditch. His dashcam (yes, some of us cyclists use video too!) recorded all of it. Sadly, it was fatal and it dealt a hammer blow to our family and confidence. Our thanks goes to PC Thorne and his team from Whitchurch who attended and managed the scene so professionally, plus the Air Ambulance and unfortunate fellow cyclists and road contractors that found my father. Only five minutes earlier he was in good spirits, stopping to help a cyclist who had just fallen. He was a proud ex-Army Major in the Royal Engineers.

I think of Cycling as a crossover between leisure and sport, less about commuting out here in the Hampshire countryside. Some of us enjoy bimbbling along, admiring the views and listening to the birds, some like the social group encouragement, and some enjoy putting pedal to the metal (carbon fibre). I took an opportunity to try out the latter this week, in my first Time Trial event. The Club gets permission from the local Police, uses 6-8 marshalls and sets a 10-25 mile course in an anti-clockwise direction (i.e. always turning left, so as not to cross the opposite carriageway). The roads are still open to traffic and we keep wary eyes peeled for lethal potholes, yet the more serious racers are pulling some serious speeds (think downhill skiing!). The outfits are hilarious: gaudy sausage skins, shaved shins and tron-like machines. I only have a regular road-bike, but it was great fun coming near-last at just 28 minutes for the 10 miles. Room for improvement.

The key is fresh air and fitness, while managing risk through keen senses. When the weather is bad, the fitness can be improved using indoor cycling machines (your bike on a flywheel). Dad and I were both training indoors for 6 months before beginning to practise for a significant charity event. The event got postponed to September 2021, 5 months from now. I will be riding the 300-mile event to Paris in his honour, in aid of the Royal British Legion – that looks after service families and the well-being of ex-service folk. You can find us on JustGiving, search for “mattisonsp2pforrbl” or Team Mattison.

Simon Mattison

SAVE EVERY DROP – WHY WATER MATTERS

Hello – my name is Sophie! You may have met my colleague, Maggie Shelton, around the local area. We're part of a team running Watercress and Winterbournes, a Landscape Partnership Scheme that is protecting, enhancing, and celebrating the Test and Itchen headwaters, including the beautiful Bourne Rivulet. Our scheme is large and varied, with lots of opportunities to get involved. At the moment, one great way to support our chalk streams is by using water wisely. As the weather grows warmer, many of us are doing more laundry and reaching for the garden hose. But did you know that doing so could have serious implications for nature?



Coot Splashing. © Andrew Parkinson 2020 VISION

Chalk streams are an incredibly precious type of habitat, housing iconic species like the brown trout, water vole, kingfisher, damselfly, and white-clawed crayfish. Their cool, clear, mineral-rich water is the result of an underground chalk aquifer, which supplies them with a fairly steady flow throughout the year.

Another quirk of the aquifer is that, in loftier parts of the landscape, some stretches of stream may dry out for weeks or months at a time. The intermittent nature of these sections gives them the title 'winterbournes', and creates an ecological timeshare in which both terrestrial and aquatic wildlife can thrive.

This natural drying of winterbournes is limited to certain areas, and the resident species are suitably adapted. But if the streams artificially run dry over larger stretches, or for longer periods, then wildlife can really suffer. A major cause of this problem is humans tapping the aquifer for fresh water, a process known as 'abstraction'. The aquifer's water is a highly precious resource for people and wildlife alike - it should be seen as something that we share. Abstraction is based on demand, so we all have a say in how big our impact will be. This is why our new project, Save Every Drop, is asking local communities to reduce their water use.

For many of us, indoor tasks are the most water-hungry. In the bathroom, you could take shorter showers, wash your hair less often, or turn off the tap while brushing your teeth. In the kitchen, you could use a washing-up bowl, put lids on boiling pans, or keep a jug of water in the fridge instead of waiting for the tap to run cold.



SHOTGUN CARTRIDGES

- Rio
- Gamebore
- Clay Pigeons
- Traps

FIREWOOD

- Seasoned Logs
- Free delivery 10 miles of RG28 7QA

Danegrove Trading, Lower Woodcott Farm, RG28 7QA

Tel: 01635 250518

Email: pamela.nicholson@danegrove.com



The Oak Tree
Nursery School

Rural nursery in Whitchurch for
children 3 m to 5 yrs, including:

- Forest school
- French lessons
- Healthy home-cooking
- Graduate-led curriculum

www.theoaktreenursery.com

Tel: 01256 895577

Doug Hopkins ~ Joinery ~

Purpose made joinery and
cabinet making to your
specifications

Tel: 01264 736 705
(Stoke)

Mob: 07857 692 445



Jason Cousins Hair Salon

Come and visit our award
winning Salon for a free
consultation and excellent
customer service.

10c Colenzo Drive
Andover Hampshire
SP10 1JS

Follow Us 

www.jasoncousinshairsalon.co.uk 01264 356011

PAUL MITCHELL

TANGLE
TEEZER

ghd

AFFINAGE



HOME ELECTRIC SOLUTIONS

Professional Domestic Electrician

Reliable Professional Affordable

For all your electrical needs

From plug sockets and light fittings to complete rewires
and everything in between

No job is too big or too small so please get in touch.

tel: 07816900083

email: info@homeelectricsolutions.co.uk

www.homeelectricsolutions.co.uk



**Trust
in Godwins to
deliver**

**GODWIN'S
SOLICITORS LLP**

12 St Thomas Street, Winchester, Hampshire SO23 9HF
01962 841484 | info@godwins-law.co.uk
godwins-law.co.uk



Yew Cottage Bed & Breakfast



Rosie and Martin Lowry

*Cosy 17th Century
Cottage accommodation*

*With Annex
in a beautiful village
on the River Test*

*Longparish, Andover,
Hampshire Sp11 6QE*

Telephone 01264 720325

www.yewcottageandlongparish.com

If you have any outdoor space, give it a little attention too. Digging in compost or laying down mulch can increase your soil's water retention abilities. Water butts will capture rain, which many plants actually prefer. Choosing the right species, and cultivating them in the right way, can greatly affect how much you turn the garden tap on.

From May onwards, we'll be sharing lots of tips on water efficiency. A special water-saving challenge will be coming to your area later in the scheme, but you can still get involved in the meantime. We suggest signing up to our monthly e-newsletter, where we share news, events, and other opportunities:

www.hiwwt.org.uk/winterbournes

Sophie Evingar

HAMPSHIRE COUNTRY & GARDEN FESTIVAL IS BACK!

The annual Hampshire Country & Garden Festival is back for 2021 in the beautiful, private gardens of Bere Mill in Whitchurch.

The festival launches on Saturday 26th June with a special evening of sparkling wine, cocktails and canapés followed by a luxury picnic hamper supper, a silent auction and a fast auction finale hosted by rugby sports presenter Mark Durden-Smith. Dust off your dancing shoes ready to party the rest of the night away courtesy of Afterdark Entertainment.

On Sunday 27th June the festival opens at 9.30am and offers a fabulous day out for all the family. Be inspired by expert guest speakers on topics as diverse as 'Producing Food with Nature', 'The Well Gardened Mind' and 'Running Free, Swimming Wild.' Live music from local band 'Head North' will create a wonderful atmosphere as you sample Hampshire's finest food and drink and let your younger family members try circus skills, enjoy story-telling or cuddle animal rescue rabbits - just a few of the many children's activities available.

For keen gardeners, there are opportunities to browse the beautiful plant nurseries, drop in at the Garden Clinic hosted by local gardening experts and ask the expert 'Gardeners Question Time' panel all your gardening queries. For shoppers, there will be a wide range of stalls from local businesses selling arts and gifts, food and drink. Last but not least, enter your canine friends in our very own Family Fun Dog show!

The weekend is in support of The Hampshire Medical Fund, a charity buying pioneering medical equipment for Basingstoke, Andover and Winchester NHS hospitals. The focus this year is to purchase new and vital Resuscitaire machines for the neonatal departments. With thanks to our gold sponsor, JM Finn Wealth Management and our silver sponsors, Fowlers Architecture and Planning and NFU Mutual North Hampshire.

To book tickets: www.hampshiregardenfestival.co.uk

WORD OF THE MONTH

This month I have two words which do partner each other so well that I offer them up together.

Firstly, TACHYGRAPHY which is the art or practice of quick writing. Shorthand though introduced by ancient Greeks and Romans is now most commonly practised as SMS "short message service" in text messaging.

Secondly, LOGODAEDALUS which is uncommon artistry in writing. So I suppose the purpose of Word of the Month is help the art of Logodaedalus survive!

Enough said and I will keep this short and tachygraphic!!

Barbara Carrodus

FLOWER HELPERS IN ST ANDREWS CHURCH

It is wonderful that we can now attend St Andrews for services and as a result, our happy band of flower arrangers are back in action. We welcome new members to join the rota so if you are interested please drop a note to Clare at claread@aol.com

Please don't be daunted – you certainly don't need to be Constance Spry – arrangements can be as formal or informal as you like. Helpers work in pairs so that it is not too challenging on your time. Decorating the church for Easter, Harvest Festival and Christmas is a group activity for as many as wish to be involved.

Clare Read

CLOSED FOOTBRIDGE AT TUFTON

Please note that the footbridge over the river in Tufton has been closed by HCC's Countryside Service as it is deemed unsafe. Unfortunately there is no alternative route over the river.

We are pushing for the bridge to be replaced as a matter of urgency, but the Countryside Service is, like many other local Government Departments, running very slowly as a result of the Covid Pandemic. The bridge is owned by HCC and they are liable for its maintenance. We have been assured by Andy Aitken, the Senior Countryside Ranger at HCC, that the work will be completed within six months. Obviously, we feel this is far too long for the path to be closed and we are pushing for more urgent action.

Hurstbourne Priors PC

THE EASTER EGG TREASURE HUNT



The Easter Egg Treasure Hunt over Easter Weekend was the perfect excuse for children to enjoy (yet more) chocolate with the bonus of some fresh air and exercise, not to mention a little bit of brain puzzling, question solving and raising funds for our village amenities.

Thank you to Hannah Ross for organising some egg-cellent fun for the Easter weekend!

MARCH HOUSE

Web Design
Logo Development
Digital Marketing
Digital Publishing
Branding
HNW Tech Tutoring

lizzie@marchhouse.co.uk
www.marchhouse.co.uk
0777 622 4985



DIRTYDOGGIES & HAIRYHORSES

Established in 1987

Highly experienced horse groom & dog beautician offering a friendly, mobile grooming service. Have your dog bathed, clipped, trimmed or hand stripped in your own home. Nail clipping. Small-to-medium sized dogs only. Clipping, trimming, mane and tail pulling for horses and ponies. Plaiting for competitions, etc. Please contact Christine Allen
07890 520684



Andover Carpet Cleaning Co.

Carpets, Rugs, Suites,
Sofas, Recliners etc.

Scotchguard &
Deodorise Treatment

Call 01264 334636
Mobile
07850 677 761

The Shearing Shed Dog Grooming

Rachel Brown
07460832214

4 Grenage Cottages
Litchfield RG28 7PT



theshearingshed1@gmail.com



TREE AND GARDEN SERVICES

Contact Drew

01256 893566 ~ 07720 842451

monkeybusiness77@hotmail.co.uk

NCHARB ~ Fully Insured ~ Free estimates and advice

QUALITY PRIVATE DENTISTRY

GD Gwynne
Dental



Complete Dental Care



Cosmetic Dentistry



24/7 access to your
dentist for advice
and emergencies



Children's Dentistry



info@gwynnedental.co.uk



www.gwynnedental.co.uk



01256 321 945



HEATSOURCE BOILERS LTD

All makes of oil and gas boiler
servicing, repair and replacement.

07952 671669 / 01962 761339

TAYLOR & KERBY ANTIQUE CLOCK REPAIRS



With a combined 35 years in the craft, Taylor & Kerby are specialists with an enthusiasm for sympathetic repairs and thorough servicing of almost any mechanical clock.

Based in Weyhill near Andover, we cover all surrounding areas of Hampshire, Wiltshire and Berkshire within a 25-mile radius for collection and delivery.

www.taylorandkerby.co.uk
Unit 5, The Fairground Craft Centre, Weyhill,
HANTS, SP11 0QN
01264 772230

Frenches Farm livery

- Beautiful livery on working farm
- Spaces available for DIY, competition, full and part livery
- Access to all facilities including indoor and outdoor arena, lunge pen and jumping field
- Stunning off road farm hacking routes and local bridal ways
- Well - kept summer and winter paddocks for daily turn out

Frenches Farm Livery

Facebook: Frenches Farm Livery

Website: www.frenchesfarmlivery-andover.co.uk

Email: anna.frenchesfarm@gmail.com

Find us in **Little London, Andover, SP11 6JG**

Please email for more information



Aardvark

PROFESSIONAL OVEN AND CARPET CLEANING SERVICES

AARDVARKOVENCLEANING.COM • AARDVARKCARPET-CLEANING.COM

07783 810806



'Light at the end of the tunnel' Update from Two Rivers Practice April 2021

The short cold winter days are now behind us and this week of sunshine, warmer weather alongside the relaxation of the government restrictions and the remarkably successful vaccine rollout has brought a well needed reprieve and further hope. We have now first dose vaccinated more than 50% of our practice's eligible population. The vaccine booking process and second dose bookings are now simpler and less stressful for all.

Can I just see the doctor now please?

The practice is continuing to adapt to manage the continued increase in (mainly non-Covid related) pressure in demands from our patients as people continue to live longer often with increasing numbers of health conditions. The team continues to grow and the old-fashioned times of people simply calling up to see their doctor are way behind us as this model was proven not sustainable. As well as developing and accessing our mini teams of doctors, advanced nurse practitioners, training doctors, various nurses and nursing assistants and administrators within the practice we have a growing team to support us now. Often you will simply be scheduled directly into see a physiotherapist, a social prescriber, or a clinical pharmacist depending on your concerns and what is most appropriate. Soon in the future you will also be able to see mental health support workers and paramedics directly from within the team too who will support us to care for you.

How can you help us at surgery at the moment?

We continue to politely ask you to share brief information with the reception booking team if you need an appointment to ensure you are scheduled with the correct team member and in the most efficient/safest way. Our support for monitoring patients living with long term conditions such as post stroke, high blood pressure, diabetes, COPD and asthma are fully operational. We will continue to encourage patients to self-care where is possible. By this I mean for example is we will continue to encourage patients to monitor their own blood pressure. This is more accurate than having it taken in the practice and requires less time alongside the doctor or nursing staff for example so safer on both accounts. Similarly, patients with very well controlled asthma will be encouraged to review their asthma online via our website with support from our nursing team whenever is required. Everyone will be called for their reviews as planned.

Reflections on living alongside covid for a year

It is easy to forget that going for days without going out or seeing or speaking to anyone has taken its toll on our community this winter. The other day I spoke to a lovely elderly lady who burst into tears on simply hearing my voice. More than anything she needed a hug and some company. Covid has touched every one of us. Whether directly we have suffered or known someone who has suffered with covid or died from this cruel illness. Or indirectly from being furloughed, suffering non-covid illness during covid, changed our work and home patterns, or even attempted to home educate our children!

Working in the nhs during a pandemic

Personally, as clinicians and as a team at both the surgery and in hospital it has been the most stressful time of our careers. We have seen heartbreak but also worked flat out for the past year under constantly changing circumstances and pressure as we continue to learn about this novel illness. This pressure has taken its toll. We are all hurting. We are well aware that more emphasis has been placed on proactively

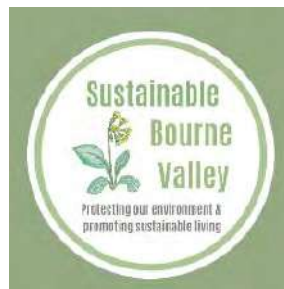
looking after our mental health and are keen to lead by example in this respect.

Stress awareness

April is stress awareness month and I suspect we would all benefit from being extra kind to ourselves and focusing on our mental health and wellbeing. This might just be something simple like sitting less and attempting to be more active. This might be picking up the phone and chatting to your family member to tell them you love them. This could be planning our staycation or planning that meet up with friends or family we haven't seen for a while. This could be a time to think about making that small change in your eating behaviour to help you be a little healthier. Just the smallest of change can make a very large difference as we continue to work out our new normal in these unusual times.

Take care.

*Dr Dan Lickman
and the team at Two Rivers Medical Partnership*



Toad Patrol 2021

This spring we carried on through lock down after clearance from 'Froglife'.

We picked up our first toads on 17th February and by 31st March had moved 646 to safety under the gate by the surgery which involved 77 hours of volunteering by our

dedicated team of 13. Last year several families helped on Derrydown Lane so hopefully a few more of the next generation will continue to care for wildlife, but this year home schooling proved too much for beleaguered parents and we were adults only. The wonderful surgery staff have been extremely careful to save any they saw on Derrydown Lane as has the majority of Derrydown traffic, but the main road is disastrous as the toads insist on marching down the middle and very few cars take the slightest notice of us on patrol. I am telling myself they are rushing back to homes further up the valley and not local!



The 2021 mating season has been an especially hard one for them. The extremes and variability of the temperature in March slowed their journeys and they arrived looking thin, then the removal of fallen willow from the lake disturbed their breeding season. We cannot take the continued success of much of our wildlife for granted because of the presence of increasing traffic volume every year, increasing amounts of invasive outdoor lighting and new housing



development, which removes whole areas of quiet and wildlife friendly ground. Hopefully plans to make the area around the lake more wildlife friendly will give many species a refuge.

Photo courtesy of SBV

Your Parish Council

Dates for Full Parish Council Meetings

• Tuesday 18th May

- Tuesday 22nd June
- Tuesday 20th July
- Tuesday 17th August
- Tuesday 21st September
- Tuesday 19th October
- Tuesday 23rd November
- Tuesday 21st December
- Tuesday 18th January 22
- Tuesday 22nd February 22
- Tuesday 22nd March 22

Summary Report - Parish Council Meeting Tuesday 20th April 2021

www.stmarybourne-pc.gov.uk

Five councillors, the Clerk and two members of the public attended the Zoom council meeting.

Matters discussed included:

Lake Clearance - Following discussion about the timing & costs involved in the recent clearance of areas, it was agreed that the ongoing development of a 'Lake Management Plan' must allow for better consultation to avoid such communication issues in future.

Finance - Last year's audited accounts had been delayed due to Covid. The clerk would now contact the auditor and get the accounts ready to be signed off.

Flood & Emergency Group update - Bank restoration work at the lake will start when the water level has dropped.

Highways updates -

a) The clerk would check if any of the tasks itemised in October 2020 for *lengthsman* work had been activated.

b) Damaged and dirty signage in the parish should be reported direct to Highways website -

<https://www.hants.gov.uk/transport/roadmaintenance/roadproblems>

c) A contractor had been appointed by Hampshire Highways on 8th April to repair damaged kerbstones and paving in the Village Centre & Shop area.

d) Jubilee Lamp - The clerk had contacted various repairers and would chase the matter up with them.

e) Fencing - The repair to the fence in front of the Village Centre damaged by the school bus is with the bus company's insurers. The damaged fence by the wall over the bridge in St Mary Bourne had been reported on Highways website.

f) Traffic lights on Church Street - There had been a number of incidents (damaged cars, squashed flowerpots) caused by traffic speeding through restricted spaces.

Recreation Ground & Play areas update - The Horticultural Society had asked permission to use the Recreation Ground for the Flower Show & Fête on Saturday 24th July. Friends of the School had asked to use it for an event on Friday 23rd July. Men's football (Covid compliant) had been played on the Rec. The cricket team's friendly practice had started and boys coaching would start shortly.

Lake update - The PC committee had met with the grounds' maintenance contractor to discuss mowing times and the retention of wild areas. Casting areas for the fishing syndicate would be marked out.

Bourne Meadow Public Toilets update - The handover from B&DBC had been delayed (Covid).

Planning - Dark Skies Initiative - A Sustainable Bourne Valley (SBV) member asked if, as the parish is a 'dark skies' area, notification about this could be attached to future planning applications. The Chairman stated that

the PC supported the 'dark skies' initiative and hoped that awareness could also be raised within the parish and the school.

Solar Panels - Rural Community Energy Fund - A SBV member reported on possible grant funding to explore the feasibility of installing solar panels on parish buildings such as the Village Centre to provide power for the toilets, shop, pavilion etc. After discussion, the PC agreed that the SBV could make further enquiries about this.

Annual Parish Meeting and Annual Parish Assembly

The Annual Parish Meeting will be held on 22nd June.

The Chairman would consider the possibility of holding the Annual Parish Assembly (usually held in April) when/if Covid restrictions allow.

Parish Office Telephone - It had not been possible to change the message on the parish council telephone number (01264 738039) but calls were being monitored by the clerk on a regular basis.

All minutes and reports can be viewed at

www.stmarybourne-pc.gov.uk

Details of all Planning Applications for the Parish

can be accessed on the B&DBC website:

www.basingstoke.gov.uk/planning or by contacting the Parish Council Clerk ☎ 01264 738 039

Newly registered Planning Applications

May 2021

• Roadside of property - removing small, overhanging, dead and dangerous trees. Removal of overhanging limb on sycamore close to house Paddock roadside. Removal of any broken/hanging/dead branches make area safe. Paddock Side - removal of approx 10 small ash trees along the roadside, all either dead/dangerous/dying. Reduction of 3 ash and sycamore along paddock edge by 2/3 leaving a finished height of 10m and spread of 7m. 1.5m reduction of over-extended sycamore limb over the house - **1 Springhill** - T/00156/21/TCA - 24 March 2021

• Conservation of loft and construction of front dormer - **6 Baptist Hill** - 21/00967/HSE - 17 March 2021

• Erection of a Log Cabin in garden - **Derrydown Farm** - 21/00951/HSE - 09 Apr 2021

• Internal and external changes to include removal of chimney and internal wall in sitting room; add wall lining and changes to kitchen chimney; reconstruct stair access to attic with new roof lights; stripping to front sash windows; changes to storage building; replace greenhouse - **Eyles Cottage, Church Street** - 21/00975/LBC & 21/00974/HSE - 17 Mar 2021

• Certificate of Lawfulness for the existing use of a farm office as a separate residential dwelling including alterations to building to create rooms in the roof, toilet/shower facilities and installation of drains - **Hilliers Farm, Upper Wyke Lane** - 21/00861/LDEU - 09 Mar 2021

Recent Local Planning Authority Decisions

• T1 Leylandii: reduce in height to that of tree T2 - **Nutwood, School Lane** - T/00126/21/TCA - **raise no objection**

- Fell approx 14 large Ash trees suffering with dieback - **adjoining Stoke Hill Road** - T/00101/21/TCA - **raise no objection**

- Extension of village shop/post office to create a café and eco shop, with additional storage - **Village Shop, Bourne Meadow** - 21/00144/FUL - **granted**

Erection of part two storey part single storey rear extension to replace existing conservatory - **Minden, High Street** - 21/00101/HSE - **granted**

- Erection of a garage following demolition of store. Reconfiguring of frontage parking area - **Chapel Cottage, High Street** - 20/03479/HSE - **granted**

- Erection of telecommunications installation 15 metre high HEL Alpha8 V2 pole on new root foundation and associated ancillary works - **Land North West of Breach Farm, Egbury Road** - 20/02949/FUL - **granted**

- Erection of single storey rear extension and remodelling of existing extension. Retrospective demolition of section of wall - **The Malt House, Church Street** - 20/02841/HSE & 20/02842/LBC - **granted**

Parish Council Meetings

The parish council will currently meet only when required to discuss urgent business and these meetings will be held remotely. As usual, notice of any meeting will be published four days in advance on the parish council website and the noticeboards. You will be able to access the meeting remotely. But to allow for smooth running, if you are planning to raise a matter with the parish council you are asked to submit it in writing in advance to clerk@stmarybourne-pc.gov.uk.

Stoke Village Fund

Stoke Village Fund is a lively group who exist to organise community events to benefit those living in Stoke and Binley. We have arranged outings, fêtes, Harvest Suppers – and many other social events. We have lots of ideas for events when we are finally out of lockdown but always are on the lookout for new ideas and new members of the committee. Our treasurer is leaving us soon (rest assured the books are in order!) so are there any volunteers out there who would like to take on this role? All the committee members help one another so you would not be entirely on your own!

We are particularly interested in events and activities that will benefit the youngest and oldest members of our villages – so if you have any ideas or are interested in being on the committee please contact Tanya Mew on 07918 195 004.

Stoke Village Fund has been in existence for many years now and is a successful and solvent group. We are fun – so come and join us – we'd love to see you on board!

SMB ST MARY BOURNE VILLAGE SHOP & post office

And breathe!! Life is slowly returning to the village and it is so lovely to see children playing on the rec, hear the sound of leather on willow at the weekends and hear the chatter and laughter of people enjoying a pint at the pub! Thank goodness!

The shop is ramping up for a busy summer. Ice cream and lollies are being ordered by the case full, wonderful locally sourced meat is available for barbeques and our wines and beer are flying out the door to be enjoyed with friends. Fresh fruit and veg are delivered every Monday, Wednesday and Friday and we have everything you need for last minute, impromptu gatherings (small, of course) or well planned, long awaited meet ups.

Plans for the Community Café have been approved by Basingstoke and Deane Borough Council which means we can move onto the next stage of raising funds and getting building quotes. It's a slow process but one in which we want to make sure we are doing it right and not rushing into things. Sometimes slow and steady wins the race.

April saw us say goodbye to our Assistant Manager Charlotte, as reported in the last Hill & Valley, and May will see us welcome Kate Coldicott as her replacement. Kate will be known to many of you in the village already and will be perfect for the shop. She's kind and friendly and has loads of experience working in village shops... and she's also an excellent cook so we may be seeing more home baked goods in the store before long!! We look forward to working with her and hope that you will pop in to welcome her from the 17th May.

That's all from us this month. If there is anything you would like to see from your village shop that's not there now, do let us know, either by popping in or emailing. We'd love to hear from you.

shop@stmarybourne.org

Lara and the Team x

April 2021 - 1☺☺ Club Draw:

£50 - Redfern Family **£20** - J & D Peart
£20 - Patrick Foote **£10** - John Scott

Village postcards

Available from the Village Shop at 30p each.



Pest Problems? Call the experts!

TEST VALLEY PEST CONTROL

RATS. MICE. SQUIRRELS. MOLES. RABBITS. BIRDS.

CLUSTER FLIES. FLEAS.

BED BUGS. ANTS. WASPS.

CLOTHES MOTHS, ETC...



Office: 01256 771632

Mobile: 07718986858

All aspects of pest control undertaken

Blackwell & Moody

A full range of memorials on display. Available in granite, marble, stone and slate. Existing memorials restored and cleaned. A personal individual service.

Magdalen Masonry Works,
Alresford Road,
Winchester, Hants
SO21 1HE

Tel: 01962 852 476

Dave Taylor Auto Repairs

Green Lane, Stoke
SP11 0PF

All work undertaken including

- Bodywork
- Paintwork
- Servicing
- MOT prep work
- Welding and repairs to MOT standard

All makes, models, light commercials

01264 736279

Home: 01264 323571

Mob: 07792 473174

Fine, Bespoke Kitchens



www.saxondesigns.co.uk : Tel 01264 773333
Studio at Weyhill Farm, Weyhill, SP118DE



RESTORATION SERVICE FURNITURE | ANTIQUES | OBJET D'ART

By experienced craftsman in Barton Stacey

- Repairs
- Polishing
- Upholstery
- Marquetry
- Floors
- Banisters
- Leather Tops
- Projects

Phone Tim Williams 07565 591481

Email: trwilliams71@gmail.com

HAVEN

MEMORIALS

HAVEN MEMORIALS
are a family run business with over 30 years' experience of creating bespoke headstones.

We pride ourselves on our friendly service and impartial advice. Contact us today to discuss your requirements.

Haven Memorials, Unit/Shop 2, 6 Wote Street,
Basingstoke, RG21 7NW

Tel: 01256 811829

admin@havenstone.co.uk www.havenstone.co.uk

YorkAssociates

Architectural Design Services
Planning Consultants

- Full design services
- Planning applications for new houses and extensions
- Applications for Listed Building Consent
- Building Regulations submissions



Andrew Steeden MRICS
Chartered Building Surveyor

Telephone: 07393 025574

andy.yorkassociates@gmail.com

www.yorkassociates.org

Satellite & aerial



Satellite & Aerial:

- TV Aerial Installations and Repairs
- Sky Satellite Installations
- Freeview & FreeSat
- FM & DAB Radio Installations
- Extra TV, Satellite & Telephone points
- Commercial (IRS, CCTV)
- European & Motorised

Sound & Vision:

- Home Entertainment Systems
- Home Cinema
- Multi Room Audio Visual Installations
- LED, LCD, Plasma TV's & Projectors
- Home Automation Systems
- Lighting Control
- Commercial

For a friendly and professional service please call 01264 934 824, email info@onedegreewest.tv or visit onedegreewest.tv



one degree west
satellite & aerial

KMSERVICES

Est. 1997



Painting & Decorating Specialists
Replacement Guttering, Cast Iron & Plastic
Gutter Cleaning & Maintenance

Tel: 01256 892122 Mobile: 0777 562 4488

Find us at www.kmservices.info

All work is tailor made to your specifications and carries a workmanship warranty



St Mary Bourne Village Centre News www.stmarybourne.co.uk

Following the government's road map we are still only able to open for a very small number of activities, but assuming we do move to step 3 on 17th May (at the earliest), we will be able to gradually open up for many of our usual functions and activities.

The Lunch

The Village Lunch is a volunteer group which started in 2004 to provide a regular low-cost social lunch with an average attendance of 70 guests over the years. We hope to resume when it is safe and viable, both for our guests and the team. As there are still many unknowns regarding the pandemic for the remainder of 2021, the Lunch Team currently think it is sensible to plan for restarting in the new year.

To help ensure the continuation of the Lunch, additional volunteers are always welcome. Contact Chris Smith on ☎ 01264 738 110.

Short Mat Bowls The St Mary Bourne Short Mat Bowls Club plays in the Main Hall on Thursdays from 2.30 to 4.30pm all year round and also from 7 to 9pm in the winter months. Any reasonably fit person can "have a go". The first visit is free - a flat pair of shoes is needed and bowls can be supplied. It is hoped that following the covid pandemic problems, Short Mat Bowls will resume in September and for further details please contact the Chairman on ☎ 01264 393 760 or the Treasurer on ☎ 01264 738 458.

Pre-school Music Classes and Baby Massage

'Music with Mummy' (1 to 3/4 years) & **'Jolly Babies'** (to approx 15 months). Small, fun and lively pre-school music classes full of singing, movement & percussion. Starting on Thursday mornings, (Wednesdays in Overton & Tuesdays in Whitchurch). 6 week term from Tuesday 20th April, cost £36 - www.musicwithmummy.co.uk

Baby Massage Classes - suitable from birth up to crawling. 5 week course, 1 hour sessions £60, 21st May 10.30 to 11.30am (no class during half term, course spread over 6 weeks) - www.hushlittlebabies.co.uk
Contact Beth Lowe on ☎ 07826 306 948.

Mothers & Toddlers - meet Thursday mornings during term time from 10 to 11.30am - from September.
Contact Sally Annals on ☎ 01264 738 269.

Jiggy Wrigglers - a parent and child group for 0 to 5 years - a musical wonderland intended to introduce your child to music, develop their sensory capabilities, and become sociable - on Tuesdays from 10 to 11.15am - from 13th April to 27th July. For more information contact Alice Kew on ☎ 07588 034643 or visit www.jiggywrigglers.com

Badminton - We are a small friendly group who get together on a Monday night (September to May) to play badminton between 7 and 9pm for some or all of the two hours. The last year has obviously been very disjointed but we are looking forward to starting the first Monday in September. If anyone would like to join us (over 18's only) - please call or message me (Lou King) on 07710 626 760.



*The Community Library - Club Room
Saturday mornings between 10.30 and 12.30*

Star Gazing Highlights in May

6-7 May - Eta Aquarids Meteor Shower

- capable of producing up to 60 meteors per hour at its peak. Shower runs through May to 28 May peaking night 6 May to morning 7 May. It is produced by dust particles left behind by comet Halley. Best viewing dark location after midnight.

11 May - New Moon - moon will be located on the same side of the Earth as the Sun and will not be visible in the night sky. Best time of the month to observe faint objects such as galaxies and star clusters as no moonlight to interfere.

17 May - Mercury at Greatest Eastern Elongation. Planet Mercury reaches greatest elongation of 22 degrees from Sun. Best time to view Mercury at its highest point above horizon in evening sky. Look for planet low in western sky just after sunset.

26-27 May - Super Moon - second of the 3 Supermoons in 2021. The moon will be located on opposite side of the Earth as the Sun and its face will be fully illuminated. Known as the Flower Moon by early Native American tribes as this time of year when spring flowers are in abundance. Moon will be near its closest approach to Earth and may appear slightly larger and brighter.

26 May - Total Lunar Eclipse. Total eclipse occurs when the moon passes completely through the earth's dark shadow, or umbra. During this type of eclipse Moon will gradually get darker and then take on rusty or blood red colour. Eclipse visible: Pacific Ocean, parts Eastern Asia, Japan, Australia and North America.

Star Counts Results are in. Results show a drop in severe light pollution compared to 2020 - lockdown likely explanation. Go to **CPRE** website to view interactive map and find your star count.

Royal Observatory and Planetarium Greenwich - Why not sign up for newsletter to hear about events and activities?

Clear skies are ideal for enjoying observing dark night skies in our rural location. Please try to minimise light pollution by reducing outdoor lighting. This benefits wildlife, environment and humans alike. Remember to wrap up warm when Star Gazing. Make a flask. Allow 15 minutes for eyes to adjust to the dark. Use a recliner and enjoy these free shows.

SAVE THE DATE



**THE ST MARY BOURNE & DISTRICT
FLOWER SHOW AND FÊTE
WILL TAKE PLACE ON
SATURDAY 24TH JULY**



**So, get planting your flowers, fruit and veg
for a bumper year of produce!**

Full details available soon via our website

www.stmarybourne.org

**with a list of competition classes
What will you enter?**

**For more information on volunteering
or taking a stall
please contact Abby Millar**

abby.millar@btinternet.com

or ☎ 07799 338 472





T C SCOTT
ST MARY BOURNE
GARAGE LTD

MOT Test Station

Repairs & Servicing of all
makes of vehicle.

Diagnostics

Welding to MOT standard

Phone (01264) 738606

Bourne Valley PYO

We grow seasonal fruit and
vegetables in the heart of the
Bourne Valley

For a great day out with the
family, come and see us.

Contact – 01264 738 888

www.bournevalleypyo.co.uk



Having a house clearance or work done?



Skip the tip and hire a skip!

Book your skip hire online with
friendly next day service!

www.rcollard.com

01264 720 257

ETHERINGTON
CONTRACTING LTD

01256 893150 / 07901 771080
www.gecontracting.co.uk



LANDSCAPING • GROUNDWORK • PLANT HIRE

How to contact your Member of Parliament Kit Malthouse

@ kit.malthouse.mp@parliament.uk

01264 401401

Or write to me at my constituency office:

✉ 2 Church Close, Andover, SP10 1DP

*I hold regular surgeries
for all constituents in
North West Hampshire*



we show you the way

It can be difficult to be confident about what your financial future looks like. Kingsley Financial offers different options to help you find your way:

- 1 **Financial Planning Service:** a detailed review of where you are & the plan to follow.
- 2 **Financial Health Check:** figure out what retirement will look like
- 3 **Financial Advice Transaction:** put in place an arrangement to meet a need
- 4 **Financial Ideas Discussion:** find out what the jargon really means to you

CHARTERED FINANCIAL ADVICE

impartial, personal, independent



www.kingsleyfinancial.co.uk

✉ enquiries@kingsleyfinancial.co.uk

📞 01256 896203



Peter A Sudlow
Chartered Wealth Manager
CFP™ Dip PFS Chartered MCSI



Eamon Keelan
Director & Chartered Financial Planner
APFS CFP™ Chartered MCSI



Kingsley Financial Management Ltd is authorised and regulated by the Financial Conduct Authority



Light Touch Warning Addictive Activity!

Last month we looked at the worms which can transform your soil, so now we need to look at composting to tempt them in.

Making your own compost saves money, reduces what you send to landfill and makes your soil wonderful.

There are three types of composting cold, hot and vermicomposting. If you have room for two bins or heaps cold composting is ideal. Many of the old rituals of layering, stirring and aerating are not necessary according to the Garden Organic Association. Compost needs some air so put in some twigs at the bottom and things like chunky cardboard or loo roll holders at intervals. You need roughly half green stuff and half brown randomly mixed and if there is lots of grass fling in sheets of newspaper every time you empty the mower. Any chicken or herbivore's manure and natural bedding is brilliant to sprinkle on. Wood ash is good to add in small amounts, also eggshells, hair clippings and very old wool or cotton rugs etc. Make sure you have a raw food and vegetarian only compost heap Buy bins or make your own containers, place in partial shade directly on to earth, cover with a bit of old carpet to protect against too much sun or rain and nature will do the rest if you can bear to wait a year or two.

For those with less room or who want their compost quickly hot composting is an option, either buy a special hot bin to do the work for you or go for the addition of soil and possibly accelerators. Make big layers of well chopped bits and judicious amounts of water. This can become an addiction and certainly needs more effort and practice to get the right recipe. Talk to an enthusiast if this appeals.



Lastly if you have very little room, perhaps only a patio, try vermiculture; basically, keeping worms as sort of pets and great for entertaining the kids! The worms are cousins of the red wrigglers who live in leaf litter and a wormery will produce a superior compost made of almost pure worm castings. Not only is their poo rich in nutrients, but it's also loaded with the microorganisms that create and maintain healthy soil. There is also a tap on some wormeries so you can use the liquid produced as liquid fertiliser or even strained for a natural insecticide. Just look up wormery UK if this appeals and don't give them indigestion with onions or citrus.

You will know when your compost is ready as it will be brown and crumbly and smell of damp woods. If not withdraw and wait a bit longer.



The George Inn

A village pub set in the heart of the community

A STUNNING refurbishment heralds the return of the landmark George Inn to St Mary Bourne and already there is a tremendous buzz, both from locals and visitors alike since outdoor dining and drinking was opened up in April.

Chris Phillips and Simon Lawrence, in January, secured The George as a free house and have, with its historic fabric and enviable central location, produced an excellent venue whether to pop in for a pint, a quick lunch or a full-on celebration dinner and all at an affordable price.

A very high-quality Victorian style design has been invoked with beautiful wallpaper and heritage colour paint work - out with the old carpets and in with custom oak floors and

gorgeous rugs. Three fireplaces have been revealed so you can expect a roaring open fire and fragrant log burners.

As well as the traditional pub tables facing on to the Summerhaugh Square, where locals and visitors alike can watch the coming and goings of the village, an attractive courtyard to the rear has been created where customers can enjoy al fresco imbibing, dining, and meeting up with friends old and new.

The cuisine, led by Simon and ably supported by sous chef Brandon Storey, focuses on local daily sourcing and offers traditional and affordable fare without a trace of 'dots, dabs and smears'. A USP of The George will be its chicken rotisserie which can be viewed by customers through the internal kitchen windows. There is also a window into the cellar that customers can view through too.

From May 17th up to 100 people can dine inside – as well as 70 outside. The Rifle Room and River Room have been remodelled into tasteful dining spaces and there is also an enclosed Private Dining Room. Chris stresses that dining can take place in the bars too, although here there will be 'no reservations', to enable anyone to 'just pop-in for a pint or two'.

Lunch and dinner will be available seven days a week including Sunday evenings and the Saturday brunch will start from May 22nd. For many villagers, the George's delicious and welcome takeaways have been enjoyed during the lockdown and from May will continue to be available all week from 5.30 to 7.30pm.

Simon, who lives in Whitchurch with his wife Belle, had previously worked with Marco Pierre White in developing the Yew Tree at Highclere as well as working with Chris at the Upham Pub Company.

Chris, as a director of the Upham Company developed well regarded pubs such as the Peat Spade in Longstock. He has over 3-years' experience with Trust House Forte starting as a chef and then embracing all manner of roles in restaurant and hotelkeeping including in prestigious properties such as the Grosvenor House, London and the George Cinq, Paris. Later, he was involved with the Slug & Lettuce with their first branch in Worcester before opening more branches in London. He then started up his own company with Front Page Pubs opening first in Chelsea. Chris also took The Fox at Tangleby to a Thai restaurant destination. With Simon he formed the Adder Pub Company Ltd in January 2020 and The George is the first fruit of their new collaboration.

The George will be capably managed by Paul Jeans and assistant manager Kayne Hewlett.

Chris lives just a few yards from The George with his son Harry and looks to become as much a part of the community as the inn is itself. **In keeping with this spirit, one per cent of the nett profit of The George will be donated to village-based groups and organisations.**

Derek Kane



G & R Cousins

BUILDING SERVICES

EXTENSIONS • RENOVATIONS



TILING • CARPENTRY • BRICKWORK

PAVING • PLASTERING • WINDOWS

GARAGE CONVERSIONS • NEW BUILDS KITCHENS • BATHROOMS • PLUMBING • ELECTRICAL

- Established over 10 years -
• FULLY INSURED •

For a FREE estimate call
01264 860115
or Mobile: 07831 342599



LOCAL BUILDER SEMI-RETIRED

Small jobs around your Home

I have been in the building business (formerly Amport Construction Ltd) for over 40 years. Do you have jobs around your house that need doing?

Room Alterations • Garage Conversions • Plastering • Tiling
Brickwork • Rendering • Carpentry • Garden Walls and much more

No job too small. References available
Please contact me for a free quotation:

Ian Gaitskell

Tel: 01264 771280 Mobile: 07787 530991

Email: amportconstruction@gmail.com Web: www.amportconstruction.co.uk

Amport based



GOLD & GREY
Elegant English Interiors

20% OFF

Curtains & Blind Fabrics

With our Made to Measure Service

Quote HILL20

Expires May 31st 2021

Call: 07795 247 142

email: Info@GoldAndGrey.UK

WWW.GoldAndGrey.UK



Ryan Dickinson
Contract Services Ltd



Leave your central heating in our hands. No more expensive repair bills with parts and labour included in our cover. We provide yearly contracts for gas and oil boilers. Visit our website for more details.

Monthly Boiler Service Contracts

- ✓ Have a happy boiler with all round protection
- ✓ One off annual fee or easy monthly payments
- ✓ An engineer on site within 24 hours
- ✓ Parts and labour included
- ✓ No expensive repair bills
- ✓ Annual boiler service
- ✓ Total peace of mind

Showroom Open
Mon - Fri: 9am - 5pm

For more details
contact us by
telephoning
01256 895216 or
visiting our
showroom at
No7 London Street
Whitchurch,
Hampshire
RG28 7LH



Check out our website
www.ryandickinsonplumbing.co.uk



Bourne Rose Beauty Sky Cousins

We offer a professional, fully qualified and dedicated client service in a full range of beauty treatments.

- Nails Waxing • Lashes & Brows • Facials
- Fake Bake Spray Tanning • Fake Bake Body Polish

Call us to see what we can offer you
07786931639



Fake Bake

Postcard from Binley May 2021

The moss has been stripped from the roof of the barn. What's left of it lies on the shingle below and at present is being fussily picked over by a robin. Not the result of my endeavours you understand but an annual labour of love carried out by the wild birds in my garden. Blackbirds, wrens, robins and various tits help themselves and zoom off in all directions to their personal building sites. I spent Easter weekend out here having a general spring clean while monitoring the comings and goings and now know most of these nest locations. Even the pigeons got in on the act, though why they bothered is anyone's guess. The nest they build each year outside my conservatory door is nothing better than a scruffy platform of twigs, the young more often than not topple out and fall to the ground and sitting there waiting for them is my hairy little lurcher, salivating as a gourmet would at the prospect of a roast rib of beef. Compare this to the immaculately woven Robin's nest. Crafted with a basket weaver's skill and nestling inside, four turquoise eggs. I still cannot get over the thrill of seeing them, a little work of art in itself.

The verges that border the lane down to Gangbridge are verdant and peppered with yellow celandines, dog violets and primroses. To confirm winter is over the first tentative spears of bluebells are showing. Stitchwort will be rampant and everywhere by the end of the month alongside honesty, with its frivolous mauve petals and garlic and mustard scent. And to put a smile on your face I give you the humble dandelion. Hedgerows send out sprays of blossom; catkins dripping like golden caterpillars, pussy willow, blackthorn, wild pear, wild cherry, crab apple. The scent from these flowers after a light rain is intoxicating and mingles with the rich, musky scent of freshly turned earth as the fields are prepared for barley. A line of poplar trees stand stark and still atop the downs, silhouetted against a pale blue spring sky and I notice as I put my bins out wild strawberry that have grown from seeds blown across the lane from my neighbour.

A friend here in Binley, a collector of books gifted me a little-known autobiography by an Australian lady named Dominie Whyntie. She was born in 1921 into what would be considered privilege and grew up at Binley House here in the village. The book is a gentle journey through those happier, simpler times of the 1920's and 30's and focuses on Binley right until the end of the war in 1945 when she emigrated to Australia.

Her father didn't work as such, nothing as vulgar as that, he had no need but raced Bentleys around Brooklands and motorboats around the Cote d'Azur when he wasn't tending to his Irish Wolfhound stud here in Binley or frequenting his club in Mayfair. Dominie's life was an endless round of tennis parties, dance classes, picnics and "cubbing" with the local hunt. The estate consisted of the main house, the farmhouse (Binley House Farm) and "a dozen tied thatched cottages" and I have been trying to identify these. Wells (there's a great old village name) the cowman's cottage I've worked out to be the Strong's place, Bacon the gardener is mine, Old lawn is next to me but where are the other nine thatched properties? She's either mistaken or I must do more research. The Hurdlers Arms was owned by Binley House and remained so right up until the late 1970's when Sir John Mellors gifted it to his employee, Jack. Fail my favourite publican of all time! But back in Dominie's day it was run by a chap called Pratley and his wife was the local bookmaker. As the only phone in the village was at Binley House a specific time was set each day to enable her to come around to place her bets! How very proper.

But it wasn't all fun and games. First the wrought iron gates at the end of the long drive and then the croquet hoops were

requisitioned by the MOD to help the war effort and then in June 1939 tragedy struck when Bullpit the farm manager was trampled to death by "Binley Ronald" the estate's prize bull, Old Bacon the gardener fell into a fire and was burned to a crisp and a poor lad named Ernie Sellwood, the under gardener was electrocuted in the cellar of the main house. He was just 15. And I mention all of this because the book throws up so many well-known village names that are still here, Bunce's, Wedge's, Goodyear's and so on, some of which go way back into previous centuries (Salisbury and Winchester Journal 21st. June 1842 - Thomas Bunce charged with having on the 7th. March last at St. Mary Bourne violently assaulted John Bullpit by throwing a stone at his head.) and these families are the history, the whattle and daub that binds this place together and helps make it so special. Long may it continue.

After war broke out, as soon as she was able to Dominie volunteered for the FANY's and was soon in France driving an ambulance. What an extraordinary generation they were. Proud, stoic, modest in their achievements and sacrifices. I can't help but feel they'd look upon this last year as nothing other than a minor inconvenience.

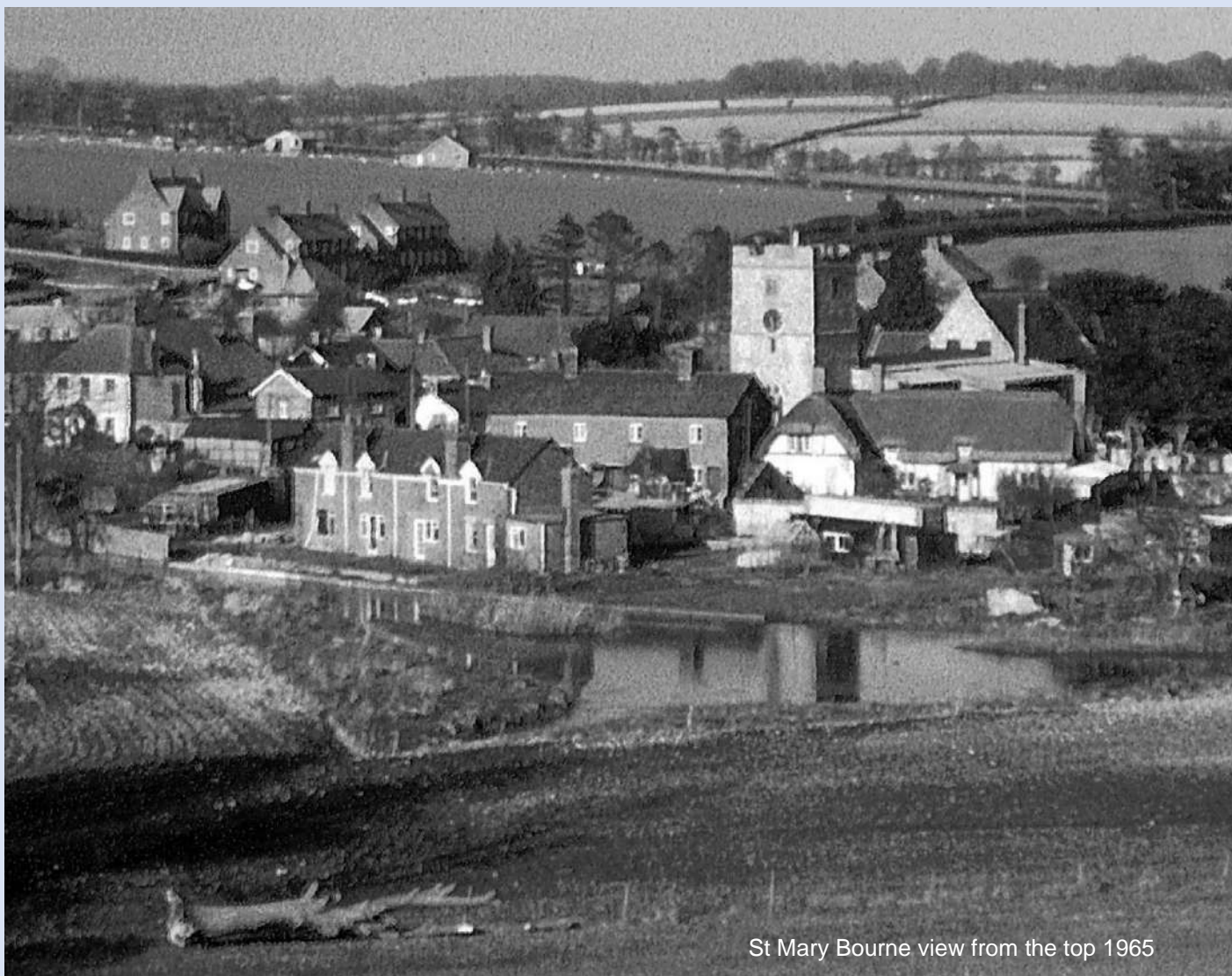
Free at last from lockdown I'm actually writing this on a train. I'm not flashing my green credentials at you but in truth I have grown bored with cars, bored with motorways and bored with the people that use them. There's still the frisson of adventure and romance with train travel, you actually feel like you're going somewhere and you meet some rather pleasant oddballs along the way.

The train I'm on is a LNER Pullman express train out of Kings Cross heading up to the glorious Yorkshire Dales. If you are a bit of a whizz on the internet like my son you can wangle an upgrade to first class at very little extra cost and it has been my good fortune to do so.

Reclining on a large, comfortable leather armchair and with my full English breakfast ordered I was joined opposite by an expensively dressed couple in their sixties. They introduced themselves as Stan and Bernie and they'd spent the last couple of days in Harley Street while Bernie had a "small procedure". Stan had a face like a squashed felt hat, communicated via a series of grunts and shoulder shrugs and was content for Bernie to do all the talking which she did incessantly. Before long I was listening to the details of her numerous sorties under the surgeon's knife and she went into such intricate detail that I felt confident I could have performed a couple of the minor ones myself. As Bernie guided me on a verbal tour of her fallopian tubes my breakfast arrived and never has an egg looked so unappetising.

I turned my attention to the chap sat across the aisle to me and thought he looked familiar, though the masks don't help. Wracking my brains, I realised he was a celebrity of sorts, a comedian. He occasionally does the press review on Sky News though I've never heard him say anything remotely funny. He was on a series of "I'm a Celebrity, get me out of here!" I'm sure. On the rare occasion I meet famous people I make it a practice of pretending I haven't a clue who they are. If you'll forgive me name-dropping, I've done it to Steve Coogan, Des Lynam, "Big Tommy" off of Groundforce and spectacularly, Charlton Heston among others. They may find the usual fawning and gushing irritating, but they hate this more, believe me! In the end I broke him, and he had to name drop and hint like crazy. Bernie was all over him like a rash, so I left them to it and took a snooze. The End. Carriage L. Seat 26A





St Mary Bourne view from the top 1965

Hurstbourne Priors Village Hall: Mrs Helen Ford, ☎ 07789 691018, e: helenford62@hotmail.co.uk

Longparish Village Hall: Mrs Jacqui Healey, ☎ 07748 322533, e: villagehall@longparish.org.uk

Longparish Community Hall: During school open hours, Mrs Christine Leach ☎ 01264 720317

St Mary Bourne Village Centre: Miss Angela Cook, ☎ 01264 738158, e: smbvillagecentre@btinternet.com

On 17th May at the earliest, village halls will be able to gradually open up for many of the usual functions and activities.

Copy date for the June 2021 Hill & Valley edition: Wednesday 19th May 2021

Your contributions - letters, pictures, comments or articles are always welcome. Contact your parish editor by the copy date.

Printed by **The Andover Printing Company Ltd** ☎ 01264 334220 www.andoverprinting.co.uk © Hill & Valley Parish Magazine 2021

Parish Editors

Hurstb' Priors: Fenella Williams, Old Parsonage, H'b Pr,
☎ 01256 892081, e: fenella.williams@btopenworld.com

Longparish: Georgina Montague, Westbrook Cottage,
☎ 01264 720 493, e: hillandvalley@longparish.org.uk

St Mary Bourne & Woodcott: Pearl Pritchard, Downhams
Cottage, Egbury, StMB, ☎ 07869 727 452,
e: pearlpritchard@outlook.com

Editorial: Tom Bremridge, Longparish ☎ 01264 720 540
Michael Widén, St Mary Bourne ☎ 01264 738 250

Production/Distribution: Tom Bremridge, Bramblegate,
Longparish, ☎ 01264 720 540, e: tbremridge@gmail.com
Michael Widén, Batsford Hs, StMB, ☎ 01264 738 250,
e: m.widen@btinternet.com

Advertising: Michael Widén, Batsford House, StMB,
☎ 01264 738 250, e: m.widen@btinternet.com

Websites

* Hill & Valley pages on-line

Hurstbourne Priors:

Parish Council: www.hurstbournepriors-pc.org.uk *

Longparish:

Parish Council: www.longparish.org.uk *

St Mary Bourne:

Parish Council: www.stmarybourne-pc.gov.uk *

Village Centre: www.stmarybourne.co.uk

Community Hub: www.stmarybourne.org

The Bright Waters Benefice: www.brightwatersbenefice.com

Front cover photograph: *M Widén*