

Issue No. 282

Hill & Valley

THE PARISH MAGAZINE OF HURSTBOURNE PRIORS, LONGPARISH, ST MARY BOURNE & WOODCOTT

£1

October 2024



Come, ye thankful people, come, Raise the song of harvest home!

Golden autumn colours, warm days and cool nights, slow-cooked nourishing and warming dishes to cheer the evenings, are all things to be welcomed and anticipated in the coming weeks. I really enjoy the changes in the season, though I know for some shortening of the days and gradual chilling of the air can be a little depressing. Yet October is a time of month to give thanks to God, for our families, our communities, our homes and work, I also think there is a real element to which we can reach each other and cherish our relationships.

In the church this has come to be known as Creationtide, a season that holistically gives thanks for those fishermen and farmers who provide produce from land and sea, and a time to reflect on how we can responsibly care for our planet and the environment and the resources that have been entrusted to us as humanity. As Christians we gave thanks because God is generous and we in turn look for opportunities to say thank you and be generous to others in the good news of Jesus Christ. Harvest reminds us of the many things we can take for granted, we also remember those who are less fortunate than we are.

There will be the opportunity to give thanks and celebrate the Harvest at all of the churches in the Benefice. The details are on the page opposite. You are all welcome! There will be opportunity to bring items for the Andover Food Bank. I leave you with this wonderful poem by Victorian poet and Jesuit priest, Gerard Manley Hopkins.

David

The Revd David Roche

Vicar

**'The world is charged with the grandeur
of God.**

**It will flame out, like shining from shook
foil;**

**It gathers to a greatness, like the ooze of
oil Crushed. Why do men then not reckon his
rod?**

**Generations have trod, have trod, have
trod;**

**And all is seared with trade; bleared,
smeared with toil;**

**And wears man's smudge and shares
man's smell: the soil**

Is bare now, nor can foot feel, being shod.

**And, for all this, nature is never spent;
There lives the dearest freshness deep
down things;**

**And though the last lights off the black
west went**

**Oh, morning, at the brown brink
eastward, springs –**

**Because the Holy Ghost over the bent
World broods with warm breast and with
ah! Bright wings.**

Amen

Gerard Manley Hopkins



Services in the Parish Churches

October 2024

All Zoom details are available from the Church wardens or Dodie Marsden.

Sunday 6th - Trinity 19

St Andrew's, Hurstbourne Priors	10.30am	<i>Holy Communion</i>
St Nicholas', Longparish	10.30am	<i>Family Harvest Festival</i>
St Peter's, St Mary Bourne	10.30am	<i>Holy Communion</i>
St James', Woodcott	9.00am	<i>Holy Communion</i>
Home Zoom Service at 10.30am		

Wednesday 9th

St Peter's, St Mary Bourne	9.30am	<i>Holy Communion</i>
----------------------------	--------	-----------------------

Sunday 13th - Trinity 20

St Andrew's, Hurstbourne Priors	11.00am	<i>Family Harvest Festival</i>
St Nicholas', Longparish	10.30am	<i>Holy Communion</i>
St Peter's, St Mary Bourne	10.30am	<i>Holy Communion</i>
St James', Woodcott	<i>No Service</i>	
<i>Winchester Cathedral Zoom Service Online</i>		

Sunday 20th - Trinity 21

St Andrew's, Hurstbourne Priors	6.00pm	<i>Benefice Evensong</i>
St Nicholas', Longparish	10.30am	<i>Family Service</i>
St Peter's, St Mary Bourne	10.30am	<i>Family Harvest Festival</i>
St James', Woodcott	9.00am	<i>Harvest Matins</i>
Home Zoom Service at 10.30am		

Wednesday 23rd

All Hallows, Whitchurch	9.30am	<i>Holy Communion</i>
-------------------------	--------	-----------------------

Sunday 27th - Trinity 22

St Andrew's, Hurstbourne Priors	10.30am	<i>Family Praise</i>
St Nicholas', Longparish	10.30am	<i>Morning Prayer</i>
St Peter's, St Mary Bourne	10.30am	<i>Holy Communion</i>
	6.00pm	<i>Benefice Evensong</i>
St James', Woodcott	<i>No service</i>	
<i>Home Zoom Service at 10.30am</i>		

For all enquiries about Baptisms, Weddings, Funerals in any of the parish churches, please contact the Church Office Administrator: ☎ **01256 893573**
brightwatersbenefice@gmail.com

Rev David Roche: ☎ 01256 892535
revd.davidroche@hotmail.com

Rev Canon Dodie Marsden:
☎ 01264 738211
dodie.marsden@gmail.com

• For details of **Roman Catholic Services** in Whitchurch or Andover: ☎ 01264 352829

• **Methodist Minister** for our parishes:
The Revd Rachel Borgars, 11 Lapwing Rise, Whitchurch, RG28 7SU ☎ 01256 895878 or **rachel.borgars@methodist.org.uk**

From the Church Registers

Funerals

"Into God's loving care we commit you ..."

David Nutbeam

Burial of ashes - Hurstbourne Priors - 7/9/24

Victoria Lewis

Thanksgiving service and burial of ashes
St Mary Bourne - 7/9/24

Alex Poppy

Burial of ashes - St Mary Bourne - 7/9/24

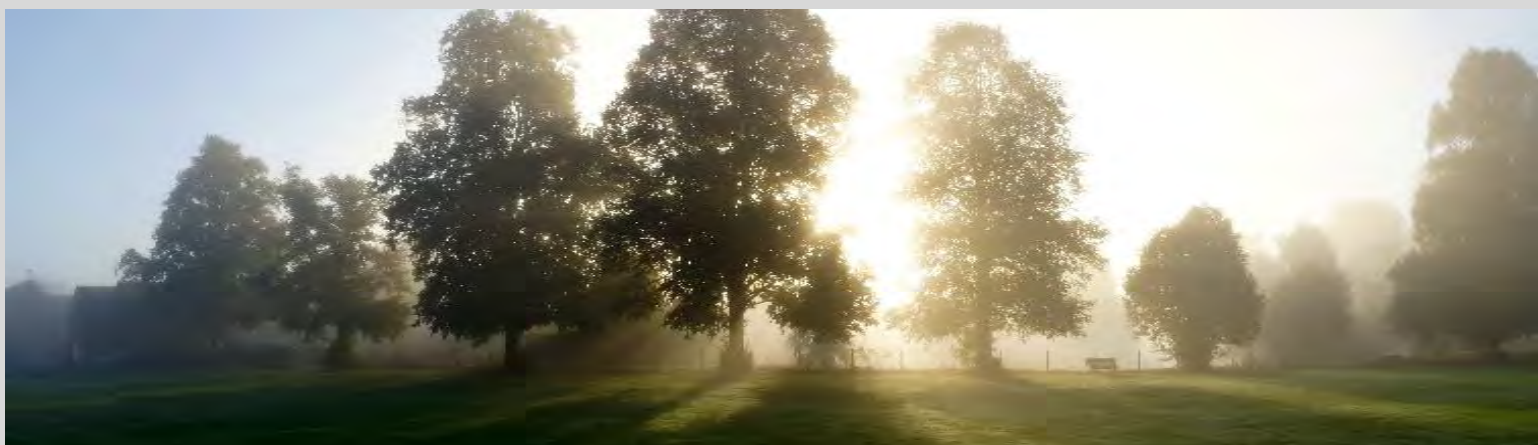
Barbara Ethel Dickinson

Funeral - Basingstoke Crematorium - 12/9/24

Derek Munnion

Funeral - St Mary Bourne - 18/9/24

LET US PRAY - If you would like us to pray for you or someone else, please email stnbrightwaters@icloud.com giving the name (no surname required) and include a reason if you wish, or contact a member of the local ministry team.





Soil improving mulch

Our sustainable mulch is packed with NPK and essential micronutrients, adding rich organic matter to improve your garden soil. A 100% sustainable by-product of green energy at Apsley Farms biogas plant.

- Retains moisture
- Suppresses weeds
- Acts as compost activator
- Repels slugs & snails
- Free from peat, synthetics & waste



Made from
crops



One 730L bag =
18 wheelbarrows



100%
peat-free



Free delivery with our vans
within 30 miles of SP11 6LZ



Order online at www.apsleyfarms.com • 01264 554433



BESPOKE, PRIVATE, LIVE-IN CARE SPECIALISTS

We arrange the finest, expertly qualified Carers to live with people in their own home in and around Hurstbourne Priors, Longparish, St Mary Bourne & Woodcott.

Arrange a free, no obligation, private meeting in the comfort of your own home.



5 STAR REVIEWS

01264 319 399

WWW.ACCESS-CARE.CO.UK
HELLO@ACCESS-CARE.CO.UK



CLEAN OVENS

DOMESTICS LTD

- AGAS • HOBS • OVENS • RANGES
- EXTRACTORS • BBQS • MICROWAVES

Eco-friendly materials used - Experienced staff
Covering Hampshire & Wiltshire

Call or email Dave

tel: 0800 707 6629 mob: 07563 693145

email: cleanovensdomestic@gmail.com

M.J.Sly Memorials Ltd



Andover Showroom
6 Swan Court,
Andover, Hants SP10 1EZ
Marlborough Showroom
Pelham Court, London Road
Marlborough, Wilts SN8 2AG

OPEN BY APPOINTMENT ONLY

www.mjsly.co.uk

- * New memorials
- * Renovations - repairs & cleaning
- * Additional inscriptions

Telephone: 01672 516797

Call or text 07535 188069

Email: info@mjsly.co.uk



Mobile knife, scissor & tool sharpening services

No call out charge

Call Becky on 07393 600630 to book a visit

More details can be found on

www.onpoint-sharpening.co.uk

To advertise in Hill & Valley, please email: hillandvalley@longparish.com

Continuing our autumnal ride up the B3048 - Summerhaugh to Stoke Highway to the North - Part 7

Any place can have 'a square,' only St. Mary Bourne has a 'Summerhaugh', according to Bourne Valley writer and historian, Kathleen Innes (1883-1967). Again, we are speaking Old English, *Summerhaugh* probably meaning something like 'an enclosure where the cattle are pastured in summer', when the water table of the Bourne was low but there was still something for them to drink. From the popular George Inn (mid-1800s), the road zigzags sharply over the Bourne's vulnerable bridge, giving a momentary glimpse of the new community shop (2001 and recent extensions, 2022) behind the Village Centre (1993, replacing the earlier building of 1955). Quickly regaining its direction past The Old Plough, closed as a pub in 1951, the B3048 passes the Holdway Cottages on the right opposite the 1888 Vicarage, almshouses built in MDCCCLXII, according to its informative Latin inscription (why on earth Latin?).

Now we are in the grandly named High Street, currently unable to boast a single shop—cue a lament over how out-of-town supermarkets with free parking have caused the high street's demise...

At the foot of Bourne Hill, next turning on the left, is the War Memorial, a focus of remembrance once a year. This part of the parish is the unpromisingly named Swampton, actually *Suantune*, the swain's or herdsman's settlement, which merited an entry in the 1086 Domesday Survey—a privilege not given to St Mary Bourne itself.

The further reach of Swampton contains no less than three non-conformist chapels, all now converted into residences, Primitive (1859) and Wesleyan Methodist (1886, united 1942) and up (Baptist) hill, a Baptist chapel (1879, but replacing ones on the site since 1824). This was used from 1900 by the Salvation Army, a respected presence in the village. The old village school was held from at least 1723 in the cottages at the junction with Gangbridge Lane, until the building of the present primary school, opposite, in 1860.

The sweep of the main road up to Gangbridge (OE *gang*=going, walking, path, then later a shallow but wide ford) is mirrored by that of Gangbridge Lane, which for the first half of its length follows closely the course of the river, on the further side of the water meadows. They seem to have been alternative routes, though Gangbridge Lane is both narrower and lower, so more vulnerable to flooding. In the field on the right, just before The Croft, is an almost ploughed-out Bronze Age (c.3000-years-old) round barrow. This is one of the possible sites for the later burial of the mysterious Cerdic, first king of Wessex, 519 to 534 AD.

Gangbridge was also the river crossing on the Southampton to Hungerford pack-horse lane, which heads off up 'Rope Yarn' Lane, off the Binley Road. It is much less well-known and younger than the Harroway.

Soon we shall enter Stoke, approaching the end of our trip up the B3048.

MC



The Community Library - Club Room
Saturday mornings between 10.30 and 12.30



Coffee at The George Inn

All ages are welcome, from all the villages, to a social coffee morning at

The George Inn St Mary Bourne on
Tuesday 8th October at 10.30am

£2.50 for coffee and biscuits - For more information contact Win Coventry - ☎ 01264 738 199.

The Lunch

Last month's Village Lunch was special as it marked our **twenty-year anniversary**, having served over 15,000 lunches during that time! The first lunch was held on the 15th of September 2004 and many of the original volunteers are still in the current team. We all celebrated with a glass of bubbly and cake to finish. Our next Village Lunch is on **Wednesday 16th October** at St Mary Bourne Village Centre, starting to serve as usual at 12.30pm. All are welcome and if a lift is needed, phone Chris on ☎ 01264-738110 by Noon on the Tuesday.



St Peter's Day Appeal

A **Very Big Thank You** to all of you who contributed to the appeal this year despite all the difficulties everyone is facing. Your generosity is wonderful. So far, we have raised a record **£7,000+** which includes *Gift Aid*. All the money raised will go towards the maintenance of our wonderful ancient church building as well as a new audio-visual system.

Again, thank you for your continued support; it is very much appreciated.

Eve & Patrick

The Amberley Ensemble

Concert held at St Peter's Church on 6th September

Thank you to all who came to the Evening of Music. We made a very pleasing **£527** which will all go to St Peter's Church.

H & N

**SEASONED
FIREWOOD**



**SHOTGUN
CARTRIDGES**

- Gamebore
 - Bio Ammo
- BEST PRICES**

WOODCOTT FARMS RG28 7QA

Tel: 01635 250518

Email: pamela.nicholson@woodcottfarms.com



FRIENDLY, PROFESSIONAL PLUMBING SERVICES

- For all your plumbing needs
- Excellent quality assured
- Bathroom & Wet Room specialists

07866 475274

aljameson@agileplumbing.com

www.agileplumbing.com

Jason Cousins Hair Salon

Come and visit our award
winning Salon for a free
consultation and excellent
customer service

10c Colenzo Drive

Andover Hampshire SP10 1JS

01264 356011



**Yew Cottage B&B
Longparish, SP11 6QE**



01264 720325 | yewcottage-longparish.com

GODWINS
SOLICITORS LLP

Trust in Godwins to deliver

Based in the heart of historic Winchester,
we've been advising our private and business
Clients with trusted legal expertise for 200 years.

Discover more at www.godwins-law.co.uk

For you

Wills / Probate / Trusts / Property

For your business

Landlord & Tenant / Farms & Estates / Property

Godwins Solicitors LLP

12 St Thomas Street, Winchester,
Hampshire SO23 9HF

Tel: 01962 841484

Email: info@godwins-law.co.uk



'The Film' at St Mary Bourne Village Centre



2024 - 15 • 1 h 34 m

Alice and Celine live a traditional lifestyle with successful husbands and sons of the same age. Life's perfect harmony is suddenly shattered after a tragic accident. Guilt, suspicion and paranoia combine to unravel their sisterly bond.

Tuesday 15th October 2024 - 7.15pm

Hall and Licensed Bar open from 6.45pm

Tickets **£5** in advance or **£7** at the door

Please reserve tickets in advance by email

smbvillagecentre@btinternet.com

www.stmarybourne.co.uk

Next Film: 19th November



Time rolls on and suddenly it's starting to feel very Autumnal - where did our Summer (or lack of it) go? *Strictly Come Dancing* has started, and I always feel like that signals the start of Christmas talking of which we have been busy sourcing Christmas Gifts, and we are looking forward to putting them on display - don't laugh, as I said before, *Strictly* has started so Christmas will be here in the blink of an eye!

Our September draw has taken place and Fiona Foote and Val Stephenson were the two winners - we think they were happy! The money we raised will be going towards Christmas Decorations for the shop... watch this space!

Kate Coldicott helped cover the kitchen while Laryssa was on holiday and, as always she did a sterling job for us - thank you Kate!

From 1st October the Kitchen will be closed on a Monday & Tuesday - the Coffee Shop will remain open for 7 days as usual - you may have already noticed the

change in the Cakes we are selling - keep watching as we are increasing our suppliers and the types of Cakes we have available.

Vicky has introduced a gluten free section - come and look!

We are planning to have a pottery painting evening in November where we can paint small Christmas Decorations - more info to follow next month.



Tickets available at the Boundary Village Shop or message Vicky or Sandra

Finally, we hope you like our latest changes and additions in both the Shop & Cafe- Vicky and I love it!

Sandra

Your Community Shop needs more volunteers to help behind the till. If you are interested to help in a friendly workplace, please call Caroline de Penning on ☎ 07786 264421

The Boundary Community Shop & Café - 1☺☺ Club September 2024 draw:

£50 - Chris Theobald **£20** - Jenny Salmon
£20 - Sophy Blakeway **£10** - David Peart

The next 1☺☺ Club Draw: Saturday 12th October

All proceeds in support of our Boundary Shop & Café



Top Tips from SBV Wintering Hedgehogs

- Check bonfires for hedgehogs before lighting.
- Do not feed any dairy or bread to the hogs. Dry cat food is best.
- Cut cd sized holes in your fences to create highways for them to roam.



Come and learn all about bats in **St. Peter's Church** on **Saturday 5th October**. We will meet inside the church at **6pm** to meet Harley from the bat conservation society for a talk and demonstration of the signs the bats have left; then later we will all be using special detectors and night scopes in the churchyard and further afield to see them in action. Please wear sensible shoes and bring warm clothes for the later walk. Also, your own bat detectors if you have one.



THE GEORGE INN ST MARY BOURNE



WE CATER FOR

- Weddings
- Christenings
- Wakes
- Birthday partys
- Corporate meetings
- And much more

CONTACT US

01264 318000

info@georgeinnstmarybourne.co.uk

The Square St Mary Bourne
Hampshire SP11 6BG



PRIVATE DINING



EVENTS

Slow down,
take a breath
and begin to feel
restored

Appointments
Monday to Saturday



Deep relaxation..
Holistic Swedish Massage

www.rebalancemassage.org

Contact Rachel
07443 226813
rachel@rebalancemassage.org
Book online

Apple Tree Cottage, Forton, Andover SP11 6NU



RAMPTON ELECTRICAL CONTRACTORS

your local professional electrician covering
all areas of Wiltshire & Hampshire

All domestic & commercial electrical
works undertaken - Bespoke Lighting Specialist

01980 734004

Michael@Ramptonelectrical.co.uk



We can help you meet all your pet and equine healthcare needs, with professional and caring staff who can treat your animal at a time that suits you. Our vets offer an emergency service giving you 24 hour reassurance.

... we're here to listen

24 hour phonenumber: 01635 254544

OUR SURGERIES:

Burlyns Surgery, Burlyns,
East Woodhay, Newbury,
Berkshire, RG20 0NU.

Foxhold House Surgery,
Crookham Common, Thatcham,
Berkshire, RG19 8EL.



THE
COACH HOUSE
VETERINARY SURGEONS

www.coachhousevets.com



Robert Allnutt Building & Garden Maintenance

Based in Longparish available for indoor and outdoor projects or maintenance including carpentry and fencing.

See my facebook page
for information and photos

Mobile 0773 3212 809



MOSAÏQUE
EASTFIELD HOUSE

BOOK ONLINE
www.mosaicquebeauty.com



Relax in beautiful Longparish!

Facials

organic & specialist
advanced vegan
skincare.

Waxing

Mooeys Masters
& Lycon premium
waxes qualified salon

Lashes & Eyebrows

Tinting, Tidying up,
Defining

Massage & Hot Stones

The Dorn Method

gentle back & joint pain
relief.

Colour & Style Analysis

Eastfield House,
Forton, Longparish SP11 6NN

T: 01264 720 797

M: 07785 268 186

E: bp@mosaiquebeauty.com

W: www.mosaicquebeauty.com



News and Views

Parish Council Activities

After a bit of a break over the summer the Parish Council met again for what turned out to be a rather long meeting on 10th September. Two months' worth of financial information, lots of planning applications, various updates on Groundwater Infiltration works, plans relating to the recreation ground, the Lake etc. **The minutes** can be viewed on the Parish Council Website, on the noticeboards, or a copy can be requested by contacting Max on clerk@stmarybourne-pc.gov.uk.

Everyone is welcome to attend the Parish Council meetings and there is a part of the meeting set aside to hear anything the community wishes to raise, although we are also quite happy for people to speak if they can add to the discussion throughout the meeting, and we often become quite interactive.

There was a discussion this month about the community's concern about the increased level of traffic and speeding through the parish, raised by residents in Stoke. We do have a mobile **Speed Indicator Device (SID)** in our possession, still from a project a few years ago, but this does require a group of volunteers to manage the device. If anyone is interested in resurrecting this volunteer group, please do get in touch. The Parish Council have put by some funds this year to look at how we can perhaps try and slow vehicles down, maybe a more modern SID, or campaigning to have the overall speed limit reduced through our part of the valley. We are not sure what the solution will be but plan to kick off a project to investigate and find what solutions we can.

Southern Water are making progress through the valley making some of the repairs they have promised, and the **Flood Emergency Group (FEG)** are continuing to put pressure on to ensure we are in a better place this winter when groundwater levels rise again. The FEG are also working to ensure that verges and kerbs that have been damaged by tanker activity are in the plan for Southern Water to take responsibility to repair.

Planning Applications

T/00420/24/TCA	Bourne Court SMB	Work on trees
24/01911/HSE	Bankcroft SMB	Replacement like for like after fire
T/00452/24/TCA	Trestan Cottage	Work on trees
24/02050/FUL	Cold Harbour Farm SMB	Replacement dwelling
24/02020/ROC	Bramley Cottage SMB	Amendments
24/02092/ROC	Land at Egbury Road	Amendments
T/00450/24/TCA	12 Stevens Green SMB	Work on trees

**Next parish council meeting:
Tuesday 8th October at 19.30.**

Village Centre Club Room - Public more than welcome.

NEW TO THE PARISH?

WELCOME DRINKS FOR NEW VILLAGERS

Tuesday 5th November 2024, 7.30pm
St Mary Bourne Village Centre

All new residents are warmly invited to a drinks reception to welcome them 'officially' to the parish*. The relaxed evening gives newcomers an opportunity to meet other new residents and to find out more about the villages and parish by chatting to representatives of different local organisations and clubs.

Anyone who has moved in since Spring 2023 is very welcome to attend. Personal invitations will be sent out nearer the date but if, by mischance, you don't receive one, please do feel free to come along and introduce yourself on the evening. We'd love to see you!

For acceptances/more information, email:
welcome@stmarybourne.org or see
<https://stmarybourne.org/new-residents/>

* Anyone in Binley, Dunley, Egbury, St Mary Bourne, Stoke, Wadwick, Woodcott and The Wykes.

Armistice Day lecture



D-Day: The Beginning of the End

"It was wonderfully, wonderfully done!"

(Trooper Lawrence Burn, 13th/18th Hussars, 1924-2023).

Churchill said that victory at El Alamein in November 1942 was not the beginning of the end, but the end of the beginning. And there was indeed a long way to go before the end really began. But when and how did the beginning actually begin?

Speaker: **Brigadier (retd) Allan Mallinson**, late The Light Dragoons, military obituarist for The Times, author of the Matthew Hervey series of novels and of military history, including *"The Making of the British Army"*, *"Too Important for the Generals"*, *"The Shape of Battle"*.

Monday 11th November 2024
St Mary Bourne Village Centre (SP11 6BE)

6.30pm: drinks (pay bar), **7.15pm:** talk + Q&A
8.15pm: drinks

Tickets **£10** from the Village Shop or on the door

In aid of the Poppy Appeal and St Peter's Church



RYAN OLIVER UPHOLSTERY

AWARD WINNING UPHOLSTERY SERVICE.
SPECIALISING IN TRADITIONAL, MODERN AND
COMMERCIAL UPHOLSTERY.

0771010890
ryanoliverupholstery@yahoo.com
www.ryanoliverupholstery.co.uk



Chimney Sweeps
HETAS Accredited

Tel: 01264 339331 Mob: 07833 368350
www.brushesup.co.uk

G&S Lark Tree Services

Andover (01264) 874 464

Mobile 07850 849 960



Tree Care ~ Firewood ~ Hedge cutting

graemelark@outlook.com
www.larktreeservices.co.uk

TW GLAZING & WINDOW REPAIRS

01264 782 211/ 077 652 60922

www.twglazingandwindowrepairs.com

misted double-glazed units
cat-flaps into UPVC and glass
glass repairs into all existing frames
hinges, handles, locks and gaskets
greenhouse glass and faceputtying
FREE QUOTES AND ADVICE



TEST VALLEY GARDEN MACHINERY LTD

— Never knowingly undercut —

INTRODUCTORY OFFER:

FREE COLLECTION & RETURNS

LOCAL RESTRICTIONS AND TERMS APPLY

LOCAL ROBOT MOWER EXPERTS
FOR ALL YOUR REQUIREMENTS

HAMPSHIRE'S LEADING
ROBOT MOWER SUPPLIER!

Tel: 0800 107 3263



www.tvgm.uk



REPAIRS * SALES * SERVICE

Postcard from Binley

I've been tasked with organising a surprise birthday party. Why they've asked me I'll never know, especially as I'm not particularly fond of the individual concerned. I'm now torn between making it a spectacular success or an unmitigated disaster. Currently I'm favouring the latter. But I'm finding the whole thing extremely stressful, and I haven't been this stressed since I organised Monty Stanton's stripogram for his surprise 70th (or was it 80th?) down at the Coronation Arms way back when... I do remember, it was a bitterly cold night and I'd asked Tommy Gibbons, Monty's "wing man" to make sure he got him to the pub by 8 o'clock sharp. The stripogram arrived at 7.45 as arranged and reflected the budget I was working to. Best described as a cross between Susan Boyle and Arthur Mullard she seemed enthused enough and I asked her to wait in the car park under cover of darkness for a few minutes until Monty arrived. An hour later there was no sign of him and the poor girl had gone down with hypothermia and had to be helped inside where she was gently "warmed up" by Pat Cryan. Eventually the great man entered the bar, all four foot ten of him and made a beeline for the stripogram removing articles of clothing as he went. I suspected immediately he'd been tipped off but half an hour later he was up on one of the tables still removing cardigans and was a mile off getting down to his undercrackers. Bewilderingly he was seemingly under the impression it was he who was the act and I've never in my life seen so many layers of clothing on one person. By this time the poor girl had made her excuses and gone, Dave Peart had called Last Orders, and a rather bored bunch of party guests started heading home.

However, Monty was a wonderful character though he could be tricky. It was rumoured he had once been a jockey, and it was on that flimsy basis he was given the job of looking after Joe Hirst's Llama up at Priors Farm. The two despised each other and if you ever saw Monty up there, he would always be carrying a shovel around. Not to pick up any Llama droppings but to clout the vicious thing when it went for him. My first introduction to village life here was one hot Flower Show weekend when the Llama was sheared for charity in the George car park. A lot of beer had been drunk that day and as a finale Monty was picked up, dumped on the back of the Llama and the creature sent through the pub with Monty clinging on for dear life screaming obscenities and drinkers diving in all directions to escape being trampled underfoot. At that precise moment a coach load of German tourists pulled up outside and all trooped off, witnesses to the bedlam going on in front of them. Johnny Cap always swore he heard one of them say "How did zey ever vin?". It was a riotous place back then but oh such happy, simple times.

Muff Corbett filmed much of this, and I believe her son Dick posted the video on the St Mary Bourne History page on Facebook. A fascinating page for anyone interested in the history of our valley and highly recommended.

And it was in this valley recently that I was invited to attend the annual Bourne Valley Chess Society lunch, with guest speaker a well-known retired Grand Master. They were a convivial yet intellectual bunch and though not an aficionado myself I'm always up for a nice nosebag though it was mildly irritating when having asked the Grand Master to pass the salt, it took him eighteen minutes to complete the move.

But let's deal with recent goings on in Binley. Coming over Cold Harbour late one evening and dropping down and right towards Wadwick, I saw ahead of me hundreds of tiny glowing green lights. "Fireflies" I thought? No, it was an army of rats on the move! As I got closer like a brown incoming tide they swept into the field on my left where an enormous tarpaulin stretches for a hundred yards over what I think must be fertilizer or animal feed? Gave me the 'heebie jeebies'.

And an incident at home had me scratching my head. I was sitting with the dogs in the sitting room, the front door was wide open, and from the garden came the most blood curdling scream followed by a high-pitched whistle. We were up out of our sofas immediately (some quicker than others) and out there. A rook was in the middle of the lawn dancing around something but flew up into a tree as we approached. There in the grass where he'd been was a large frog, undamaged. I went to poke it with my stick, but it emitted this screaming sound again. Most disturbing but reading up on the matter I have discovered stories of frogs keeping cats at bay by doing this exact thing, so it must be some form of self defence mechanism?

One never stops learning here in Binley!

NA



St Mary Bourne Flower Show & Fête Thank You Drinks

Calling all our kind Volunteers, Raffle ticket sellers, Stall Holders, Sponsors, Donors and Supporters!!

Please join us for *THANK YOU Drinks and nibbles* on **Friday 11th October** in the Village Centre at **7.30pm**. All warmly welcome - the friendly committee will be very pleased to see you.

Next year's show will be on Saturday 26th July 2025



Star Gazing in October

Andover Astronomical Society
Electronically Assisted Astronomy
Lawrence Saville
17th October 2024 at 7.30pm
Hurstbourne Tarrant
Community Centre

You don't have to squint down the eyepiece of a telescope to see the wonders of the universe. Nowadays *Electronically Assisted Astronomy* (EEA) uses a camera instead to capture & display spectacular images almost instantly on your smart phone.



The equipment is literally "point-and-view" – you can take it anywhere and set it up in less than ten minutes. Lawrence Saville has been following EEA since its early beginnings. He will share his knowledge with us, along with tips for getting the best views of the planets, the moon and even far away nebulae that are invisible to the naked eye!

August Red Moon taken by **Andy Watson** using his electronically assisted telescope



A Hint of Mint

As the seasons change, the vibrant colours of summer give way to the rich russet hues of autumn. Along the edges of our chalk streams, water mint plants are displaying their last splashes of pinkish purple. From July to

October, this native plant brightens up riverbanks with its dense clusters of tiny flowers. Even in the colder months, you can still spot its square stems and oval, hairy, jagged-edged leaves.

Water mint is one of about 15 mint species that grow in the UK, although many of these are hybrids. Did you know, for example, that peppermint is a cross between water mint and spearmint – another of our native mint species? In fact, peppermint plants can sometimes be found growing in the wild near their parents.

As its name suggests, water mint loves to grow in damp places. It favours ponds, bog gardens, marshes, floodplain meadows, wet woodlands, and the margins of rivers. In an ideal habitat, it can grow to over 50cm tall and spread sideways through rhizomes (thick stems that grow underground) and runners (thin stems that grow on or close to the ground).

Like other plants that grow in and around our chalk streams, water mint plays a key role in protecting the habitat. It offers shelter to animals that frequent the margins, like juvenile fish, small mammals, and emerging riverflies. Its root system helps to stabilise the bank and shield it from erosion, which saves fish eggs from being smothered by sediment. Its flowers provide nectar to peacock, comma, and small tortoiseshell butterflies, while its leaves are a favourite food of mint leaf and green tortoise beetles.

As with the kind you can buy from the supermarket (which is usually spearmint or peppermint), water mint has aromatic leaves that can be used to make flavourful drinks and meals. But it's best not to use wild water mint for this purpose, because there may be pesticides, herbicides, or pollution in the area. Instead, see if you can safely get close enough to detect its bright and refreshing scent – a real treat on an autumn walk!

If you'd like to learn more about chalk stream flora and fauna, check out the Watercress and Winterbournes scheme by visiting hiwwt.org.uk/winterbournes. Our work is supported by the National Lottery Heritage Fund.

Free Online Talk

Water Meadows: *The Myth and Magic of the Drowner* 23rd October at 7pm, online

Water meadows were a central part of Hampshire's landscape for more than 300 years. Join us to learn about their role in sustainable agriculture through the centuries, and why they remain important to our county's history and ecology today. Book your ticket at hiwwt.org.uk/winterbournes.

Bourne Fest

Last September, a group of 12 friends, associates and strangers sat in a room at the George to discuss the idea of holding a community event in 2024. We had 2 things in mind – bringing the entire community together and raising funds for current and future community initiatives. After much deliberation, we settled on the idea of a festival, spanning a whole weekend in June. Having grown up in St Mary Bourne, I had in mind childhood memories of rounders and volleyball tournaments, barn dances and hog roasts, open gardens and music festivals, village picnics and drama festivals and wanted to bring some of these together, creating future memories for a new generation, and so, our merry band of committee members embarked on a mission to get 'Bourne Fest' off the ground.

Our plans were met with a mixture of excitement, support and, in some part scepticism, but we worked hard to engage as many local businesses and groups within the Bourne Valley as possible and more and more volunteers came forward wanting to be a part of it. The weekend itself was a mix of live music (who knew there was such a diverse mix of incredibly talented local musicians?), food, sports, and children's activities, and nestling in the centre of all that entertainment was our D-Day picnic where thank goodness we were blessed with some sunshine, warmth and fabulous singing from the super talented Longparish choir followed by some wartime songs from the brilliant Govergirlz band. All in all, we were blown away with the support we had and the turn out on the Saturday evening was beyond our expectations.

The Sunday was a fabulous day of sports and more community activities with a fun run, football tournament, tennis tournament, village teas and open gardens. We were unsure how we would do financially, but I'm pleased to say we did break even.

So that was Bourne Fest 2024, and I would like to say a massive thank you to everyone who helped sew bunting, bake cakes, manned the bar and BBQ, arranged sports activities, painted faces, opened their gardens, poured tea, bought tickets, danced at the picnic, performed on stage and supported us!



So next year, we have a date: **13th to 15th June 2025**. We will be back with a slightly different format but same commitment to putting on an amazing event. And, in case you are interested, those 12 friends, associates and

strangers are now a group of firm friends, bought together by achieving something great. If you would like to be involved next year or have any questions or ideas, please e-mail: bournefest@mail.com

Sam Ellis-Cosgrove

GARAGE SALE

Fund Raising for Dementia Research Centre

Saturday 5th October - 10-12am

APRIL COTTAGE, STOKE, SP11 ONY

Remembering...

Leonard Arthur Colston Fuller

3rd September 1936 - 23rd April 2024

St Mary Bourne lost an eminent engineer and a respected member of the local community on the death of Leonard Fuller at Wakeswood earlier this year

Leonard Fuller was born in Andover, Hampshire on 3rd September 1936. He was the second child of his parents, Arthur Biddulph Fuller and Vida Christian Fuller. He followed his sister Margaret who was four years older than him and they remained very close throughout their lives. The family moved to Wakeswood in 1949 when Arthur Fuller bought the estate from the Pilkington family. Leonard was educated at West Holme School and Bradfield College. He then continued to study Mechanical Engineering at Imperial College, London.

After gaining his university degree and serving an engineering apprenticeship, Leonard joined the family business Taskers – a long-established engineering firm which excelled in the production of bespoke high specification road trailers. In his very early years, Leonard had assisted his father, Arthur, who had designed and built a specialist trailer to carry damaged Spitfires during World War II. This innovative trailer (later known as a Queen Mary) won a contract from the War Department and subsequently many hundreds of them were produced for use around the world.

Unfortunately, Taskers suffered financial pressures after the war under different corporate ownerships who then decided to sell the site in Anna Valley (where Taskers had been established since the 1800s) in order to re-locate the firm to the north of England.

Because of this, Leonard reluctantly decided to leave Taskers. In 1984 he set up Andover Trailers to re-establish specialist trailer manufacturing with a skilled local workforce. He sold the firm in 1992 but continued working there as a director until he finally retired aged 82. During his time, Andover Trailers won many contracts for the design and manufacture of trailers for the military and Special Forces. This gave Leonard special satisfaction as it created a link with his father's wartime legacy.

Leonard was also a director of the trade body SMMT (Society of Motor Manufacturers and Traders), where he became a driving force for change and standardisation in the UK, and he also worked within Europe to set new standards.

Retirement from Andover Trailers allowed Leonard more time to focus on things he wanted to do. He loved travelling with his friends to Greece, Italy and beyond, exploring historical sites and observing the engineering skills of the Romans and Greeks. From his early childhood he was always interested in how things were made, how they worked, and the skilful craftsmanship involved. He had great knowledge; not only of the engineering and motor industries, but also of the arts, music and nature; and he enjoyed sharing his interests with his friends.

The Fuller family had a tradition of collecting things so, due to Leonard's particular interest in horology, he assembled a specialist collection of clocks and timepieces which were placed throughout the house in working condition or undergoing painstaking repairs and maintenance on various tables. He bequeathed this collection to be sold for charitable purposes on his death.

But in particular, Leonard loved just being in the peaceful private surroundings of Wakeswood - the home where he and his beloved sister Margaret had spent their childhoods and lived until their deaths.

He enjoyed taking family members and friends for walks through the grounds and ancient woodland, and he greatly valued the friendship and loyalty of local people, especially that of Neil Brooks who was first taken on as a young man for a six-week trial period for gardening, woodland and grounds maintenance at Wakeswood. Neil is still working there single-handedly nearly 30 years later.

Leonard also deeply appreciated the wonderful support and friendship given to him by his small "team" of housekeepers and carers who enabled him to spend his last days at home in the place that he loved. Another special friend in those last years was *Charles Rex*, a young peacock who turned up unexpectedly in the Wakeswood grounds one autumn, who then became a focal part of Leonard's life, providing interest and companionship.

Leonard's ashes are now interred in St Peter's churchyard where his parents and sister are also buried. He was a generous and quiet supporter of the church and of many other local organisations.

His legacy is secure as a true friend of St Mary Bourne and an eminent professional engineer following in his family tradition.

Leonard Fuller R.I.P

Christopher (Chris) William Franklin

21st December 1947 - 1st August 2023

Chris was born in Northolt, Middlesex. He was an only child and he spent most of his childhood playing football outside in the streets which were much quieter in those days. He left school at 15 and obtained an engineering apprenticeship. He met Elaine Greenhalgh at Glaxo Laboratories Social Club and they married in 1968.

An opportunity then came up for Chris to move to Andover with his engineering company and later on he and Elaine with their three children, Emma, Russ & Dean moved to live in St Mary Bourne in 1973 where the children went to school. Chris worked at AMF Legge and then Acumed until his retirement. He loved living in St Mary Bourne and enjoyed taking part in village events whenever possible.

He and Elaine celebrated their Golden Wedding Anniversary in 2018 and they always enjoyed family visits.

*Chris is sadly missed by Elaine,
their children and their grandson Dayle.*

James Barnett

Quality Painting & Decorating



Advanced City & Guilds
Over 25 Years Experience
Tel: 01264394543
Mobile: 07747603710
Email: Jamesbarnett1@btinternet.com

BURLISON Photography

MPA Photographer of the Year 2022/2023



CAA Authorised & Insured Aerial Photography & Film. Family portraiture at home or on location.

- Wedding Photography & Film
- Commercial • PR
- Interior & Lifestyle Photography & Film
- Corporate & Private Event Photography & Film
- Image Restoration Service

Contact Dave on
07771 803025

MPA



www.burlisonphotography.com



info@burlisonphotography.com



OVERTON
BATHROOM CENTRE LTD

BATHROOMS PLUMBING SALES SHOWROOMS INSTALLATION

With over 30 years of experience Overton Bathroom Centre, can be relied upon to offer extensive product knowledge and installation expertise. We pride ourselves on our customer service and provide 'Supply Only' or 'Supply & Installation' to meet your requirements. Please get in touch to discuss your needs!

Tel: 01256 770374
info@overtonbathrooms.co.uk
@overtonbathrooms
www.overtonbathrooms.co.uk

Overton Bathroom Centre Ltd - 4 High Street Overton Hants RG25 3HA



Trustworthy Arboriculture Specialists,
family run and based locally In Longparish

- Tree Care & Removal • Hedge Care
- 24/7 emergency call out • Stump Removal

CALL NOW FOR A FREE PROFESSIONAL QUOTE
07554 996945

www.tcstreecare.co.uk



I SEE A LINE. I CROSS IT.

BESPOKE TAILORING BY DRESS2KILL.COM

£100 off your first **DRESS 2 KILL**
Bespoke Suit



Exclusive offer for readers
of The Hill & Valley Magazine

Dress 2 Kill now at 84 High St, Andover SP10 1NE Above At Last

LONGPARISH PARISH COUNCIL

Council Chairman

Emma.palmerpc@longparish.org.uk or telephone 07881 923150

REPORT FROM PC MEETING ON 9 SEPTEMBER

PLANNING

The Parish Council had **NO OBJECTION** to:

Tree works at Grebe House, Forton

OPEN SPACES

The PC is looking into options for new nets for the football field goal posts. The PC is also looking into options for a contractor to do the hedge cutting in the cemetery. The PC is studying options to replace the village notice boards at the Village Shop and the Village Hall.

HIGHWAYS

The PC is contacting HCC via Cllr Drew regarding the ash trees on Sugar Lane.

The PC is liaising with Southern Water in order to get more advanced notice of any road closures and also different signage to state that businesses are still open in the event of road disruption.

Recruitment for a new Parish Clerk

Unfortunately, the new PC clerk is unable to continue with the role, therefore we are recruiting for a new Clerk on the same contract terms and conditions as agreed by the council in June.

Parish Council Meetings

The next Parish Council Meeting will be held at **7.30pm on Monday 14th October.**

Parish Council Meetings are public, and parishioners are also welcome to speak on specific agenda items by prior arrangement with the Chairman, or on any matter as part of the Period for Public Speaking.

Minutes of all previous meetings are available on the Longparish website

www.longparish.org.uk/parish-council

COULD YOU BE LONGPARISH'S NEXT PARISH CLERK?

EMPLOYMENT OPPORTUNITY (PART TIME)

Longparish Parish Council is seeking a forward-thinking and proactive Parish Clerk to work with councillors for the good of the community. You will be the council's Proper Officer and Responsible Financial Officer, and as such under a statutory duty to carry out all the functions, and in particular to serve or issue all the notifications required by law of a local authority's Proper Officer.

The Clerk will be totally responsible for ensuring that the instructions of the Council in connection with its function as a Local Authority are carried out. The Clerk is expected to advise the Council on, and assist in the formation of, overall policies to be followed in respect of the Authority's activities and in particular to produce all the information required for making effective decisions and to implement constructively all decisions. The person appointed will be accountable to the Council for the effective management of all its resources and will report to them as and when required. The Clerk will be the Responsible Financial Officer and responsible for all financial records of the Council and the careful administration of its finances.

- Work from home, with attendance in person to monthly PC meeting, and other ad hoc meetings and onsite visits as required

- **44 hours per month (approx. 10 hours per week to be worked flexibly as required)**
- Paid holiday, Work from Home Allowance, paid mileage (up to 10 miles in each direction)
- Training
- IT equipment supplied

The successful applicant will have previous clerk experience and/or experience in a general administration role, with knowledge and experience in budget setting, financial control and VAT. Must be well organised, with great attention to detail, a working knowledge of procedures, roles, duties and responsibilities of Parish Councillors or a willingness to learn. Ideally, CiLCA qualified, although the council would consider applicants who commit to becoming CiLCA qualified or are in the process of obtaining this qualification. Best suited to someone within a reasonable travelling distance.

This is a challenging, but very interesting and fulfilling role, working for a team of supportive and proactive volunteer councillors.

For further information, including Job Description and Person Specification, please see **Parish Clerk Recruitment Information** in the Parish Council Documents section of the Longparish website:

<https://www.longparish.org.uk/parish-council>

Please feel free to contact the current Parish Council Chairman for an informal chat about this position. Email emma.palmerpc@longparish.org.uk or telephone 07881 923150

How to apply

Please send CV and covering letter* to: Emma Palmer, Chairman

Email: emma.palmerpc@longparish.org.uk

****Applications submitted without a covering letter will not be considered***

CLOSING DATE FOR APPLICATIONS: Friday 11 October 2024



Friday Lunch Club Autumn Dates 2024

Longparish Village Hall

12.00 - 2.00pm

The Lunch Club is open to everyone in the community. We do ask you to book so that we have an idea of numbers for catering.

At our August meeting we were very pleased to receive a 5 Star rating from TVBC Environment and Health Service

We serve a light lunch, all homemade, of soup and roll followed by cake, tea and coffee for just **£3**

Take a break from your desk and come just for lunch at 12.00

Friday 25th October

Friday 29th November

Friday 20th December Christmas Lunch tbc
To book a place Tel Andrea 720 457 or Christian 720398 Transport can be arranged



G & R COUSINS BUILDING SERVICES

EXTENSIONS - NEW BUILD REFURBISHMENTS

01264 860115
07900 241907 - 07831 342599

www.gandrcousins.co.uk




Bourne Rose Beauty

Sky Ralph

- Manicure & Pedicure • Fake Bake Spray Tan
- Lashes & Brows • Waxing

Professional beauty therapist based within the Bourne Valley

07786931639

Find me on Facebook & Instagram  





Year End Accounts
Corporation Tax
Self Assessment
VAT
Payroll

07921481704 www.bourneaccounting.uk



TUCKER

Kitchens, Furniture & Joinery

Est: 1976

Unit 9 Towergate Industrial Park
Colebrook Way, Andover, Hants, SP10 3BB
t: 01264 365113 www.tuckerjoinery.co.uk



Ryan Dickinson Contract Services Ltd



Have A Happy Boiler

All Year Round Protection from
£18 A month

Leave your central heating in our hands. No more expensive repair bills with parts and labour included in our cover. Total peace of mind knowing that an engineer will be with you within 24 hours of a breakdown.

- ✓ Have a happy boiler with all round protection
- ✓ One off annual fee or easy monthly payments
- ✓ An engineer on site within 24 hours
- ✓ Parts and labour included
- ✓ No expensive repair bills
- ✓ Annual boiler service
- ✓ Total peace of mind

For further details on the different types of monthly gas and oil boiler service contracts visit our website:
www.ryandickinsonplumbing.co.uk

Or Telephone us on
01256 895216



Leave your central heating in our hands. No more expensive repair bills with parts and labour included in our cover. Total peace of mind knowing that an engineer will be with you within 24 hours of a breakdown.

We have Gas Safe accreditation.

We are a family run company and pride ourselves on being able to offer you a range of services delivered by a highly skilled team of office administrators, installers and engineers.



LOCAL BUILDER SEMI-RETIRED

Small jobs around your Home

I have been in the building business (formerly Amport Construction Ltd) for over 40 years. Do you have jobs around your house that need doing?

**Room Alterations • Garage Conversions • Plastering • Tiling
Brickwork • Rendering • Carpentry • Garden Walls and much more**

No job too small. References available
Please contact me for a free quotation:

Ian Gaitskell

Tel: 01264 710942 Mobile: 07787 530991

Email: amportconstruction@gmail.com Web: amportconstruction.co.uk

Abotts Ann Based



WALK AND LITTERPICK– best way to keep fit!

Thank you to lots of people who pick up litter when they see it! In September, 3 of us picked two and half bags full, from Southside Road, Mill Lane and the B3048, plus some fly tipped tyres, reported to TVBC.

Next one Friday 11th October 9.15am, meet at the Village Hall with coffee at the LCA coffee morning at the Plough from 10.00am.

Tel **Christian Dryden 720 398** or email christian.drydenpc@longparish.org.uk

LONGPARISH GARDENING CLUB

Tuesday, 29th October

Gillian Taylor

“For the Love of Roses”

7pm

Longparish Village Hall. SP11 6QX



Members Free (Visitors Welcome £5.00)
Usual Raffle towards the cost of future speakers

Any queries please to **Rosie Lowry 01264720325** or **Marion Bell 01264720205**

Longparish Little School

We have enjoyed welcoming all our new families to Little School at the beginning of this



school year. We have been busy picking blackberries and baking delicious blackberry muffins. We observed some

workers closing a road and integrated this into our construction play in the garden. In the art area, we have been experimenting with mixing colours and creating artwork using salad spinners. Our Friday sports sessions have been popular, with team games and activities like rolling dragon eggs to see who can get closest to the



mummy dragon. A new feature in our outdoor area is a water wall, where children have enjoyed investigating how to make the water flow and create a rainfall effect.



We are now carrying out viewings for September 2025. If you would like to come and look around, please call us on 01264 7202455 or visit our website

<https://www.longparishlittleschool.org.uk/>

The Annual Longparish Pumpkin Show 2pm Saturday 26th October School/community hall



Come and join us.

Whether you have grown your own, or designed a shop bought pumpkin, all are welcome, for a fun filled afternoon.

This year's categories are:

Home Grown: (must be grown by your own fair hands)



Heaviest pumpkin (Child and adult categories)



Best decorated (Child and adult categories)

Decorated with a Story book theme. Can you make your pumpkin look like the Gruffalo, The Hungry Caterpillar, The Tiger who came to Tea or another of your favourite story book characters.

There will be a £2.50 fee for each category entry, all proceeds go to **Longparish Little School and Robin class.**

There will also be Face painting, a tombola, raffle and refreshments.



ALL ASPECTS OF PEST CONTROL WORK UNDERTAKEN

One Off Treatments & Ongoing Pest Management Programmes Available

- ✓ Fully Insured ✓ All Staff DBS Checked
- ✓ Professional & Friendly BPCA Qualified Staff
- ✓ All staff use Non Sign Written Vehicles. Discreet Service

OUR SERVICES

Residential & Commercial Properties Served.

Rat and Mouse Treatments.
Wasp and Hornet Nest Treatments & Removal.
Traditional Mole Catching Specialists.
Cluster Fly Treatments.
Clothes Moth Fumigation & Management.
Bed Bug & Flea Treatments.
Pest Proofing Work.
Rodent, Insect & Bird Control.
Wildlife Management.

CONTACT US HEAD OFFICE: (01256) 643481 LOCAL OPERATOR: 07718986858

Blackwell & Moody

A full range of memorials on display. Available in granite, marble, stone and slate. Existing memorials restored and cleaned. A personal individual service.

Magdalen Masonry Works,
Alresford Road,
Winchester, Hants
SO21 1HE

Tel: 01962 852 476

Black Fox Chimney Sweeping

Clean, professional service

Fully insured and DBS Checked

Sweeping certificates provided

All types of chimney and appliance

Nest removals

Stove repairs and maintenance

Call: 073 873 88 999

Email: info@blackfoxsweep.co.uk

Web: www.blackfoxsweep.co.uk

BAZ MYERS

PERSONAL TRAINER

HEALTH | FITNESS | NUTRITION

SERVICES:

- 1-2-1 personal training
- Small group personal training/fitness classes (max 4 people)
- Fitness classes
- Online exercise programming and nutrition planning
- Nutrition advice



TEST VALLEY

Working in a location that suits you. At yours, in the park or in village halls in various locations in the Test Valley.



WWW.BAZMYERSPT.COM

GET IN TOUCH: bazmyerspt@gmail.com | 07789 073916



LANDSCAPING SERVICE

- Patios / Terraces
- Decking
- Fencing
- Turfing

TIM WILLIAMS

Experienced Landscaper since 1996

Phone: 07565 591481

Email: trwilliams71@gmail.com

EST. HM 1987

HAVEN MEMORIALS

MONUMENTAL MASONS



A local family run business with over 30 years experience creating bespoke Headstones. We pride ourselves on our friendly service and impartial advice.

Contact us today to discuss your requirements. Let our family help yours in this time of need.

www.havenmemorials.co.uk

admin@havenstone.co.uk

Fleet: 01252 811691

Basingstoke: 01256 811829

YorkAssociates

Architectural Design Services
Planning Consultants

- Full design services
- Planning applications for new houses and extensions
- Applications for Listed Building Consent
- Building Regulations submissions



Andrew Steeden MRICS

Chartered Building Surveyor

Telephone: 07393 025574

andy.yorkassociates@gmail.com

www.yorkassociates.org

Satellite & aerial



Satellite & Aerial:

- TV Aerial Installations and Repairs
- Sky Satellite Installations
- Freeview & FreeSat
- FM & DAB Radio Installations
- Extra TV, Satellite & Telephone points
- Commercial (IRS, CCTV)
- European & Motorised

Sound & Vision:

- Home Entertainment Systems
- Home Cinema
- Multi Room Audio Visual Installations
- LED, LCD, Plasma TV's & Projectors
- Home Automation Systems
- Lighting Control
- Commercial

For a friendly and professional service please call 01264 934 824, email info@onedegreewest.tv or visit onedegreewest.tv



one degree west
satellite & aerial

KMSERVICES

Est. 1997



Painting & Decorating Specialists
Replacement Guttering, Cast Iron & Plastic
Gutter Cleaning & Maintenance

Tel: 01256 892122 Mobile: 0777 562 4488

Find us at www.kmservices.info

All work is tailor made to your specifications and carries a workmanship warranty



Friends of Longparish School Thank you to everyone that took part in the Longparish Run last month!

AGM All are welcome to join us at our AGM on Wednesday 2 October. It will start at 7.30pm in the school/community hall. Find out what we have been up to this year, our plans for the coming year, and vote on the new committee members.

Tesco Blue Tokens: We are delighted to say we have been chosen for the customer vote for Tesco's Stronger Starts scheme – otherwise known as the blue tokens! When shopping at Tesco branches in Andover, please use your blue token to vote for Friends of Longparish School. Votes from October through to mid-January could raise up to £1,500 for our Lookout Appeal. Thank you!

More information:

Website: www.pta-events.co.uk/longparish

Facebook: fb.me/FriendsofLongparishSchool

Instagram: @friendsoflongparishschool

LCA - L2SOTM - The Longparish Second Sunday of the Month handicap race

We welcomed three new runners: Asha Hails, Nicole Montague and Rory Chichester to The Plough for the September race on a pleasant morning. They all live close by so we hope they will become regulars. A tree down across the path out of North Acre did not deter the runners who enjoyed the challenge of the hills and the joy of the long gentle downhill stretch on the Middleway in the last kilometre.



New runners often underestimate their speed and so it was this time with Asha, Nicole and Rory in first, second and fourth places. Mr Handicap will sort that out next month. First home off a genuine handicap was Adam Priestley in 3rd became our Most Improved Man. Megan Brunwin (accompanied by her Mum, Jo) was our Rising Star and Claire Collier was Most Improved Woman. Well done all!



Afterwards we enjoyed a convivial chat over coffee and bacon butties.

Thank you very much to Maggie Barber and Christina and Jack Searle, for marshalling and to David Gould for processing the results.

The next race is on **Sunday 13 October, starting at 9am** at The Plough. New runners are always welcome, and you don't have to be fast. It's a handicap race so everyone, whatever their pace, has a chance of winning.

Please do give me a call or drop me an email if you'd like to join us. For more information, please see <http://l2sotm.longparish.org.uk/index.php>

Jeremy Barber

01264 720459 mrjeremybarber@gmail.com

LCA Coffee Morning

Upcoming Dates:

11th of October

8th of November

13th of December



Venue for each TBA

10 am – 11:45 am

Come along for coffee, biscuits, and a chat on the 2nd Friday of the month. Everyone is welcome.

Just £1 – Free refills!

LONGPARISH
AUTUMN TIDY UP
SATURDAY 9.30AM - 12.30PM
19th OCTOBER 2024

Come along with join the team, litter picking, cutting back, leaf gathering and much more.

Meet at the playground 9.30am

Some equipment provided, including hi-vis jackets.
If available please bring Wheel barrows, rakes, & brushes.
Remember to bring your gloves and wear boots or wellies.
Everyone Welcome - Buffet Lunch at The Cricketers

Let me know if you will be joining via FB messenger or email:
joanne.lca@longparish.org.uk

Parish Paths Partnership
with Hampshire County Council



T C SCOTT
ST MARY BOURNE
GARAGE LTD

MOT Test Station

Repairs & Servicing of all
makes of vehicle.

Diagnostics

Welding to MOT standard

Phone (01264) 738606

PERFECT PADDOCKS

Complete Maintenance
Service incl Large Lawns

- Water Pipes and Cables installed
 - Land Drainage Diggers and Dumpers 1-20 t
- Fully Licensed Waste Carrier
Other services available

Just ask David & Suzanne
Egbury Road, St Mary Bourne

07759 607633

dspagriccontracting@gmail.com



COLLARD

DEMOLISH | DISPOSE | RECYCLE

Having a house clearance or work done?



Skip the tip and hire a skip!

Book your skip hire online with
friendly next day service!

www.rcollard.com

01264 720 257

ETHERINGTON

CONTRACTING LTD



01256 893150 / 07901 771080
www.gecontracting.co.uk

LANDSCAPING • GROUNDWORK • PLANT HIRE

How to contact your Member of Parliament Kit Malthouse

@ kit.malthouse.mp@parliament.uk

☎ 01264 401401

Or write to me at my constituency office:

✉ 2 Church Close, Andover, SP10 1DP

*I hold regular surgeries
for all constituents in
North West Hampshire*



Photograph by Robert Symonds
2 Church Close, Andover, Hampshire, SP10 1DP

CHARTERED FINANCIAL ADVICE

personal patient impartial



Sapienter
Wealth
Management

Telephone: 0330 100 4926

Email: enquiries@sapienterwm.com

Website: http://sapienterwm.london



Peter A Sudlow Chartered FCSI
Chartered Fellow (Financial Planning)
Certified Financial Planner™





Harvest Festival Service
Sunday 6th October 2024
10.30am at St Nicholas Church
 with the Longparish Village Choir

followed by
Harvest Lunch
12 noon in Longparish Village Hall

Please come to a community lunch for villagers,
 family and friends
 Numbers limited to 60

So, hurry to get your tickets
 from either: -

- Acre Stores
- or Pippa Sawyer
 (720315)
- or John and Jane
 Young (720233)

**Adults - £7.50, Children (10 -17) - £3.00, Children
 under 10 – Free**

Please bring any produce to the service
All produce will go to The Andover Foodbank.

Longparish Church and Village Fete 2024

Huge thanks to John Young for his tireless work and
 diligence running the fete for 5 years. His efforts have been
 exemplary and much appreciated by everyone.

His fete report follows:

The weather played a significant role in this year's
 proceedings, to say the least! Very many thanks go to
 those who helped set-up in the somewhat 'biblical' rain,
 both on the Thursday and the Friday. And equal thanks
 to those who took down the tentage and stored
 everything back in the Village Hall on the following
 Friday and Saturday, after more heavy rain during the
 earlier part of the week made it impossible for the tents
 to dry out sufficiently.

After the meeting we had in the Village Hall in January,
 when the question was, "Do we actually need and want
 a Fete this year?", the answer was a definitive **YES**. So,

we formed a new committee almost immediately from
 those attending the meeting, and got to work
 straightaway booking the acts we wanted etc. I would
 like to pay tribute to each and every one of the
 committees' members for their input and hard work and
 for making the fete such a great success this year.

It is hard work, but very rewarding when we turn in a
 result like we managed – just over £12,000 net, which is
 a magnificent effort by everyone involved. It is the
 Longparish prima event of the year, and a wonderful
 way of drawing the village together in a way no other
 event quite does. People get to know others they might
 never come into contact with at any other time during
 the year.

Thanks go to Richard Wills and the Cricket Club for the
 use of the cricket ground and car park.

Thanks also go to Jonathan and Emma Palmer, for the
 first prize of the helicopter ride and Emma for opening
 the fete for us – thank you both.

The HEMA (Historic European
 Martial Arts) display of martial
 arts was something different this
 year and went down very well.



Back to the weather – The very
 heavy rain on both the Thursday
 and Friday, and the threat of rain
 on the Saturday itself definitely put many people off.
 The throughput was down quite markedly, as we can tell
 from the car park numbers, which makes the end result
 even more astonishing.

**Congratulations everyone for a brilliant day and thanks
 to all who made it happen.**

Next year, Harriet Major has agreed to chair the fete
 committee, and I would ask you all to support her as
 much and as best as you can, by stepping up to run a
 stall or help in some other way. I, for one, will do my
 best to help in whatever way I can, although physically
 none of us are getting any younger! We need some
 younger folk to keep things going. Given the right
 weather, I have no doubt we can do even better next
 year.

The distribution of the 50% money available to Village
 projects will be decided and distributed before
 Christmas. If you have a good, well supported
 proposition for some of these funds, please send them
 to me via email before the end of October. The
 committee deciding the distribution will consist of
 committee members from the Fete, The Church, The
 Village Hall, The Parish Council and the LCA.

John Young, Fete Chairman and Churchwarden
Email: jayoung1322@gmail.com

Barton Stacey WI

The weather this summer has been changeable to say the least, so as the end of August approached, we were a little nervous about the plans for our Summer Social evening. Luck was on our side, and the weather was absolutely perfect for a wonderful evening at Longstock Park Water Gardens. On arrival we were warmly greeted by a member of their team who shared a brief history of the gardens. We were then free to roam at our leisure. The early evening sun shone down, the birds sang, and the ducks glided gracefully across the water. As this was a private visit, just for us, it was so peaceful, and we could fully appreciate our beautiful surroundings.

At our meeting on **31st October**, we will be starting early preparations for the festive period by getting creative with textiles. We will be using a simple technique to create a fabric star, perfect as a decoration on the tree, or as part of a special gift tag. Our practical, hands-on meetings are always popular and are the perfect opportunity for a catch up with friends, especially as there is always a tasty treat and a cuppa on offer. If you would like to join us, please see contact details below.

We are a small group of ladies who meet on the **last Thursday of each month** in the Village Hall, from **7.30pm**. We enjoy a variety of interesting presentations from external speakers, as well as fun, hands-on creative activities. We offer a warm welcome and encourage guests to our meetings to see what becoming a member of the WI can offer.

For more information, please contact Sue Atrill (email: bartonstaceypres@hampshirewi.org.uk) or Donna Oliver (bartonstaceysec@hampshirewi.org.uk).



Results of the August Draw 2024 St Nicholas Church 100 Club

The draw was made on the 31st of August 2024.

First prize:	No. 18	£77.00
Second prize:	No. 31	£46.00
Third Prize:	No. 12	£16.00

To date we have 62 members. Our 1st year anniversary is approaching fast on 6th December, and of course, as the name suggests, we would like to get up to 100 numbers/members. You can join at any time, and it works like this: -

Membership is set at **£5.00 per number per month**. There is no limit to the numbers you can purchase. If you would like to join, you may well have the letter and application form still at home, but if you require another one, please let me know Or, if you have any other queries, please contact:

John Young, Churchwarden & PCC Stewardship Officer, St. Nicholas Church
Tel: 01264 720233 Mob: 07860 630489
Email: jayoung1322@gmail.com



Double Chefs!

After helping out over holidays, Chef Tom has agreed to join Billy in the kitchen, and we're delighted to tell you that we now have two super chefs cooking up a storm.

This means we can start to plan longer opening hours and already have a delicious new menu and daily Specials. Come on down and sample something scrumptious!



CHRISTMAS IS ON ITS WAY.....



Too soon! But in case you're already feeling chilly, a peek at our gorgeous Christmas menu will fill you with a warm glow. We're already taking bookings for Christmas feasting from late November. Book now to get yourself in the mood!



STAFF WANTED

We're looking for friendly Front of House and Bar staff. Please do contact us if you, or anyone you know, might be interested.

Call us on 01264 720069 or book via the website

www.ploughinn.org

Email: info@ploughinn.org



LCA Tuesday Talks

Please save the date for the next Tuesday Talk on November 12th.

The speaker will be John Dawson.

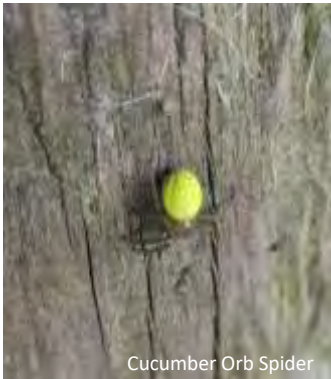
More information to follow in the November issue of Hill & Valley

LONGPARISH WILDLIFE

What a funny year we are having, most of our summer migrants arrived late. Now the local Swifts at the Croft left on the 18th of July a whole week earlier than last year. The Swallows at one nest left after just one brood instead of two or three.

Two pairs of House Martins nesting in front of my place one nest only had one brood the other only had two broods. Now they have all gone for winter. The experts are putting it down to a lack of insects. In September's Hill and Valley, the person who writes the very nice article A POSTCARD FROM BINLEY said years ago while they drove through the valley their car was splattered with insects but when they drive through now there are hardly any.

Something to think about how many cars were on the road then to how many there are now. I expect most of you would have noticed the lack of Bumble Bees, Hover Flies, Aphides and Wasps etc. With Bumble Bees the queen which has overwintered in a nice cosy spot somewhere now needs to build a nest to raise her family. But she needs dry weather to collect her dry grass and moss but most of all she needs nectar to keep her going so if it's pouring with rain day after day, she can't. Eventually she will die. The same with wasp queens which collect chewed up wood to make her nest and feed on insects to keep her going.



Cucumber Orb Spider

Summer is now over, and our winter migrants will soon be arriving to feed on our berries. Let's hope it's not a cold winter for our birds and insects.

Oh, and pensioners.

Chris Bowman



To mark the end of another summer season, LCC held its annual end of season Golf Day at Leckford course in early September followed by its Presentation Evening a week later.

Unfortunately, the weather tried to put a damper on the Golf Day fun, but players were not deterred, and an enjoyable time was had by all. The club would like to thank Paul Giles for enabling this event for another year.

Presentation Evening which celebrates senior players' achievements during the season was held this year at Longparish Primary school. A special mention goes to Jordan Blackmore (photo right) as top wicket taker both in the 1st team this season and in County Division 2.

Zac Allen (photo below) was top run scorer for the 1st team. It was also very satisfying to see so many young players moving up into the adult teams and getting their first experience of adult cricket.



By the time you are reading this, the ground and pavilion will have been closed up for the winter but nowadays cricket doesn't stop and LCC will be competing in the indoor leagues at Dummer Cricket Centre during the winter months.

Alison Allen

Tis nearly the Season!



Fun and Festive activities:

November 31st – Lantern making at St Nicolas Church.

December 1st – Lantern Walk

Longparish Christmas Fayre - **December 7th** – Community Hall.

The Christmas Fayre is returning again this year. Please save the date so you can join us. Volunteers and Stall holders are invited to reach out to

lpchristmasfayre@outlook.com



EQ TILING

Elliott Glasspool

Professional Wall & Floor Tiler
Porcelain, Ceramic, Natural Stone
25 years experience

07597 420648

elliottglasspool@hotmail.com

Kitchens, Bedrooms, Appliances

Ranges to suit all budgets

**SAXON
DESIGNS
KITCHEN
COMPANY**



Visit our studio at Weyhill Farm - SP118DE
saxondesigns.co.uk - tel 01264 77 33 33



CLOCK BARN



Your timeless countryside
wedding experience

Clock Barn, Tufton Warren, Whitchurch, Hampshire RG28 7RB
01256 630199 clockbarn@wedding-venues.co.uk @clockbarn

© DM Photography

Tried - Tested - Trusted

We only offer the best advice and no-pressure sales calls



Aluminium, Hardwood, uPVC

Triple Glazing Specialist

Windows

Doors

Glazed extensions

9 Mylen Business Centre, Andover
sales@kjmggroup.co.uk
www.kjmggroup.co.uk
01264 359355



KJM

AWARD WINNING

We are proud of our reputation and proven track record

WEATHER: AUGUST 2024

Total rainfall for this month	39mm/1.53in
Total for 2024 (to date)	661mm/26.6in
Total for 2023	670mm/26.37in
Max temp	32°C/90f(12 th)
Min temp	8°C/46f(22 nd)



John Smail

LADIES COFFEE MORNING

Our October Coffee Morning will be held by Fran Johnson at no. 3, Apsley Cottages, on **Thursday 10th October from 10.15am to 12 noon**. All ages welcome!

For more information or for offers to hold a coffee morning, please contact Susie Sorby (tel. 892665 or email: sbsorby@hotmail.com)



PARISH COUNCIL MEETING SCHEDULE

In order to accommodate bookings at the Village Hall, the Parish Council have changed the day of their meetings. Parish Council meetings will now be held on the **final Thursday of every other month at 6.30pm**.

As always, any resident can attend meetings, there is no need to give any notice of your intention to come. However, if you think that Councillors would benefit from advance notice in order to research an issue please do let me know by email at richard.waterman150@btinternet.com or at the Parish Office on **01264 772460**.

The final meeting this year will now be held on the following date:

Thursday 28th November

Richard Waterman, Parish Clerk

PETS' SERVICE

Our annual Pets' Service, where we celebrate and give thanks for our pets at St Andrew's Church was held on Sunday 15th September, and we were delighted to welcome so many fluffy, feathered and four-legged friends. Thank you to everyone who came, and to their pets for joining us!



BOURNE Again Feet

Hilary Steeden MGFHP MAFHP

Foot Health Practitioner

Tel: 01264 738 554

Mob. 07787 703 900



- . Problem Nails . Verrucas
- . Corns . Cracked Heels
- . Hard Skin . Fungal Infections

BELVEDERE TRAVEL



Catered gulet holidays in Turkey

www.belvederetravel.com

email info@janeblount.co.uk

01264 738533 and 07884003082



DRAIN TECH
TANKERS.COM

01264 710543

- Septic Tank and Cesspit Emptying
- Sewage Treatment Plant Emptying
- High Pressure Jetting on board vehicles
- Grease Trap and Oil Interceptor Emptying
- 24 Hours 7 Days a Week Service
- Drainage System Installation and Maintenance
- Multi Tank Discount Loyalty packages available



Email: booking@draintechtankers.com Web: www.draintechtankers.com

Firewood

Mixed Hardwood naturally seasoned and locally sourced.
Limited to 1m³ loads till April when 1m³ to 4m³ loads will be available. Stock up before price increase in July

1m³ - £135

Split Bundles

1m split lengths of partly seasoned hardwood allowing you to cut and season yourself, giving you **BIG** saving on buying ready cut logs without the hard work of splitting just cut to the size you want

Available between February to end of May
£90 per bundle or £175 for two

Please contact 01980 862323 - 07872 930767
pdmacpherson@hotmail.co.uk



Below one split bundle



WEST JOINERY

- Bespoke doors
- Windows
- Kitchens
- Wardrobes
- Bookcases

For all your joinery needs

07717 570748

Julian@uswests.co.uk



HAULAGE & WASTE MANAGEMENT

ANDOVER BASED - UK WIDE DELIVERY

Family run business providing an excellent same day delivery service. We are VAT registered & fully licensed. (Waste Carrier Registration Number CB0426129)

House Moves • Office Moves • Professional White Glove Service
Garden, House & Garage Clearances • General Waste Removal
Mattress & Fridge Freezer Removal • Scrap Metal Collection

DENNIS & SONS LTD

transport.dandshaulage@gmail.com
01264 318040
dennissandsonsltd.co.uk
[facebook.com/dennissonsltd](https://www.facebook.com/dennissonsltd)

BREACH FARM WOODLAND BURIAL GROUND ST MARY BOURNE, SP11 6DQ

A beautiful woodland burial ground overlooking the Bourne Valley

Single, Double and Ashes plots available.
Area for pets.

For further information/request a brochure:-
Mobile: 07789 888399

Email: lisa@breachfarmwoodlandburialground.co.uk
www.breachfarmwoodlandburialground.co.uk



Whitchurch Wills

FREE INITIAL CONSULTATION

"FRIENDLY, ACCESSIBLE AND QUALITY SERVICE"

YOUR LOCAL WILL WRITER FROM WHITCHURCH

- Will Writing • Review of existing Wills • Lasting Power of Attorney
- Estate Planning • Trusts • Probate Services

Clare Datta, BA(Hons) MSWW

T: 01256 896336 M: 07810 455581

E: claredatta@whitchurchwills.co.uk W: www.whitchurchwills.co.uk



To advertise in Hill & Valley, please email: hillandvalley@longparish.com

HARVEST CELEBRATIONS

The St Andrew's Harvest Festival will be held on **Sunday, 13th October at 11.00am.**

As usual, we will be collecting non-perishable food items for the Andover Food Bank. Suitable items include cereal, tea, coffee, sugar, pasta, rice, tinned foods (meat, fish, fruit and vegetables), fruit juice and long-life milk. Please bring your donations to the service or leave them in the church beforehand.



The service is followed by the **Harvest Lunch at 12.30pm.** This will be held at Mistletoe Cottage, by kind invitation of Ian and Denise Bradley. Tickets are £7 for adults and £2.50 for children (under 5s free). Please book your tickets from Fenella Williams (01256 892081), and please let us know by **13th October** if you would like to attend, so we can plan our catering!

We would also be most grateful for any help with the following:

- Volunteers to cook a Mistletoe Cottage Shepherd's Pie, or braised red cabbage.
- Volunteers to make a pudding.
- Donations towards the Raffle.

All proceeds from the Lunch will be donated to the Mityana Projects Trust.

ST ANDREW'S DANCE

St Andrew's Church are holding an evening of Scottish Reels on **St Andrew's Day, Saturday 30th November** in the Village Hall, Hurstbourne Priors.

All levels and abilities very welcome. Guidance and interval refreshments will be provided. **Tickets are £25, and are available from Fenella Williams: [fenella.williams@btopenworld.com/01256 892081](mailto:fenella.williams@btopenworld.com)** For any rusty reelers, or newcomers who would like to give reeling a whirl, an excellent place to start in the meantime is *The Swinging Sporrán* by Roddy Martine & Andrew Campbell, or London Reels have lots of good tutorials on YouTube.



CHAPEL ARTS AUTUMN EVENTS

Chapel Arts Studios is thrilled to announce its brand new Autumn programme, packed with a vibrant array of workshops, events, and activities designed to inspire creativity in both children and adults. From jewellery making and painting to Halloween fun and Christmas crafts, CAS invites the community to join in and explore their artistic talents.

Highlights of the CAS October Programme include:

Painting with Purpose but not Perfection, Saturday 5th and 12th October, 1–2pm

Embrace your artistic side with a focus on expression over perfection.

Introduction to Ink: Day Workshop, Thursday 10th October, 10am–4pm

Explore various ink techniques and create beautiful works of art in this full-day session.

Expressions in Clay, Saturday 19th October, 10am–12pm for ages 5–11, 1–3pm for ages 12+ and adults

Hands-on clay workshops that cater to both young artists and adults.

PROPERTY REPAIRS & MAINTENANCE

Woodwork,
welding, gutters,
power washing &
general repairs

No job too small

07939 653218

jeremycranswick61@gmail.com

MARH fuels



01635 253253

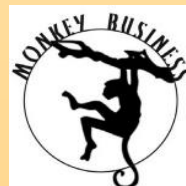
Andover Carpet Cleaning Co.



Carpets, Rugs,
Suites, Sofas,
Recliners etc.

Scotchguard &
Deodorise Treatment

07850 677 761



TREE AND GARDEN SERVICES

Contact Drew

01256 893566 07720 842451

monkeybusiness77@hotmail.co.uk

NCHARB ~ Fully Insured
Free estimates and advice

P C BUTLER BRICKWORK

General and Traditional Building
Roofing, Maintenance & Repairs,
Painting & Decorating

No job too small

01256 781830 or 07833 586250

paulbutler3@hotmail.co.uk



GWYNNE DENTAL
QUALITY PRIVATE DENTISTRY



OFFICE@GWYNNEDENTAL.CO.UK



WWW.GWYNNEDENTAL.CO.UK



01256 321 945



All aspects of
general dentistry



Facial aesthetics
and invisalign



Same day emergency
treatment



Advanced restorative
treatment including
implants



HEATSOURCE BOILERS LTD

All makes of oil and gas boiler
servicing, repair and replacement.

07952 671669 / 01962 761339



Aardvark
Cleaning Services Ltd

Professional cleaning service specialising in carpets,
stone flooring, cooking appliances and upholstery

07783810806

www.aardvarkcleaningservicesltd.com



Bourne Valley Hair

Situated in the heart of St Mary Bourne,
visit your Vidal Sassoon trained Stylist
and Wella Professionals colourist.
Working from home studio, by appointment only.

Get in touch... **07824 553723**

Evening Introduction to Silver Clay, Wednesday 23rd October, 6–9 pm

A perfect mid-week creative escape to learn the basics of silver clay in a relaxed evening setting.

The Glo Cave: Spooky Halloween Fun, Thursday 31st October, 11am–3pm

Get spooky with family-friendly Halloween activities in the Glo Cave.



To book your spot or find out more about the events, visit www.chapelartsstudios.co.uk or contact CAS at info@chapelartsstudios.co.uk or by visiting the CAS Community shop at 65 High Street, Andover, Hampshire (opposite the old Marks and Spencers)

Chapel Arts Studios (CAS) is an innovative contemporary arts organisation based in Andover, dedicated to fostering creativity, supporting artists, and engaging communities through dynamic exhibitions, events, and educational programmes.

For more information about Chapel Arts Studios, visit www.chapelartsstudios.co.uk or follow them on Facebook or Instagram @CASArtists

NATIONAL THEATRE LIVE

National Theatre Live returns to the Whitchurch Parish Hall, on **Wednesday 6th November** with a screening of *Prima Facie*. Doors open at 6.30pm for a 7pm start.

Jodie Comer's (*Killing Eve*) Olivier and Tony Award-winning performance in Suzie Miller's gripping one-woman play returns to cinemas. Tessa is a young, brilliant barrister. She has worked her way up from working class origins to be at the top of her game; defending; cross examining and

winning. An unexpected event forces her to confront the lines where the patriarchal power of the law, burden of proof and morals diverge.

Prima Facie takes us to the heart of where emotion and experience collide with the rules of the game.

Justin Martin directs this solo tour de force, captured live from the intimate Harold Pinter Theatre in London's West End.

Includes sensitive subject matter including references to sex, violence and rape



Tickets are £10 and you can:

- Book online at www.ticketsource.co.uk and search for Whitchurch and *Prima Facie*.
- Reserve your tickets by calling 01256 896 877 (if necessary, please leave a message including your name, number of tickets and your contact number). Please note, these tickets will be chargeable even if you are unable to come.
- Tickets will also be available on the door

We will be showing the full NTL production of a recorded live broadcast and a short interval film. There is a bar available.

Doug Hopkins
~ Joinery ~

Purpose made joinery and
cabinet making to your
specifications

07857 692 445

doughopkins@hotmail.com



Matt Townsend
Landscaping and Fencing

Call 07825710750

Over 18 years' experience
Fully Qualified and Insured

www.matttownsendlandscapingandfencing.com

Landscaping
Fencing
Patio
Turfing
Decking
Concrete Bases
and much more

BARSU GrassWorks

Garden Maintenance

Grass Cutting
Lawn Treatment
Small Hedge Cutting

For Competitive Rates call

Barry

01264 393803

Mobile: 07876 178865


or email:


barsu79@ntlworld.com


FREEDOM
BESPOKE

BIFOLDING, SLIDING, FRENCH & RESIDENTIAL DOORS, WINDOWS & ROOF LIGHTS



 **01264 301 302**

 **sales@freedombespoke.co.uk**

 **Visit our showroom at Andover Down, SP11 6LJ**



Hayward
Brick and Flint

Restoration, Alterations, New build

Adrian Hayward

Bricklaying And Flintwork Contractor

Groundworks, Fencing,
Patios, Chimney Rebuild
Landscaping, Drives
Drainage, Damp proofing,

10 Hirst Copse
St Mary Bourne
Andover
sp116st

tel 07833691542
jinxzoolander@hotmail.co.uk



RIBA 
Chartered Practice

MATHEWSON WATERS ARCHITECTS

WHITCHURCH 07540 726562

www.mw-architects.co.uk



SILK MILL NEWS AND EVENTS

Heritage Engineering Award

In September we were presented with the Heritage Engineering Award by the Institution of Mechanical Engineers. We feel extremely proud of this achievement, as it recognises our contribution to passing on essential skills to future generations of Weavers and Tacklers, and also our continued efforts to repair and conserve historical machinery. The Institution acknowledges that “the Mill has become an inspiring and atmospheric place to learn about its past.” We hope to have a commemorative plaque on display soon, to share this wonderful achievement.

Charity Shop Thanks

Thank you to all who donated time and goods to the Mill's Friends and Volunteers while they were resident in Rotations Charity Shop at the end of August. The shop sales raised £1679.18, and £1500 of that has been pledged to the Mill's “Big Give Christmas Challenge” which will allow us to make the most of our fundraising potential this Christmas. We hope to raise vital funds for our Weaving Futures project, supporting our growing team of Weaver Tacklers, conserving our historic machinery and growing our network of supporters.

More Good News about Fundraising

We're thrilled that conservation work to Loom 10 is near completion. Thanks to a grant we have been able to dismantle the loom and do the necessary repairs. With your generous donations, we raised more than £1,000 which allowed us to send the dismantled loom parts to have their paint removed by a specialist. Repainting is being carried out by hand here at the Mill before the loom is rebuilt and put back into use. We're grateful to all who contributed.

Current Exhibition

“Passionate Women – Exploring Female Strength through the Alchemy of Thread and Stitch” will be on show between **7th September and 24th November**. Over the centuries, strong rebellious women have successfully battled for equality against all the odds. In celebration of such strong women, Hampshire-based textile art group The Alchemist's Needle will bring their work to the Mill, featuring a series of

unique artworks inspired by women who have shaped our world.

The Friendship of Jane Austen and Martha – a theatrical talk by Jane Glennie, 7–8.30pm

Martha Lloyd, “experimental housekeeper” and Jane Austen's best friend, gossips with her neighbours as she packs up their house in Castle Square, Southampton. Tickets £15 per person, must be booked in advance. Doors open at 6.30pm and tea and coffee will be available for a donation.

“Weave a Wall Hanging” Workshop, 10th October OR 8th November, 10am–1pm

In a small group, you'll learn tips and techniques from our weaving team and also have time to create your own patterns and textures on one of our Louet tabletop looms. Suitable for beginners. Tickets £60 per person.

Darning Workshop, 12th October, 2–4pm

In this beginners' workshop you'll learn how to rebuild a hole and be guided step-by-step to darn it. You'll also be given an overview of the different kinds of mending. All tools will be provided. Tickets £35 per person.

Two-day Weaving Course, 15th & 16th October, 10.30am–4pm

This new weaving course for beginners will introduce you to the entire weaving process, with training provided by our silk weavers. You'll also take home your own creation: a fabulous wall hanging.

Tickets £150 per person.

BOO-tiful Halloween Fun at Half Term, 30th or 31st October, 11am–12 noon or 1–2pm

These special magical printing activities are suitable for children aged 5–12. Artists from the Alchemist's Needle will help participants to make either a super spooky pencil case or a tote bag. Cost £3 per child. Booking is essential. Children should wear clothes that won't matter if acrylic paint is spilled on them.

Tickets for our events are generally available from the Mill Shop or from our website via the 'What's on' page. Contact: info@whitchurchsilkmill.org.uk – www.whitchurchsilkmill.org.uk

ST MARY BOURNE & WOODCOTT

- 5 10am to 12 Noon - Repair Café - The George Inn
 5 10am to 12 Noon - Garage Sale - April Cottage, Stoke
 5 6pm - Hampshire Bat Group - St Peter's Church
 8 10.30am - Coffee at The George Inn
 8 7.30pm - Parish Council meeting - Village Centre Club Room
 11 7.30pm - *Flower Show & Fête Thank You Drinks* - Village Centre
 15 7.15pm - 'The Film' - **MOTHERS' INSTINCT** - Village Centre
 16 12.30pm - *'The Lunch'* - Village Centre Main Hall
 17 7.30pm - Andover Astronomical Society - H'b Tarrant Community Centre
Saturday mornings - 10.30am to 12.30pm - **The Community Library** - Village Centre Club Room

STOCKBRIDGE MUSIC

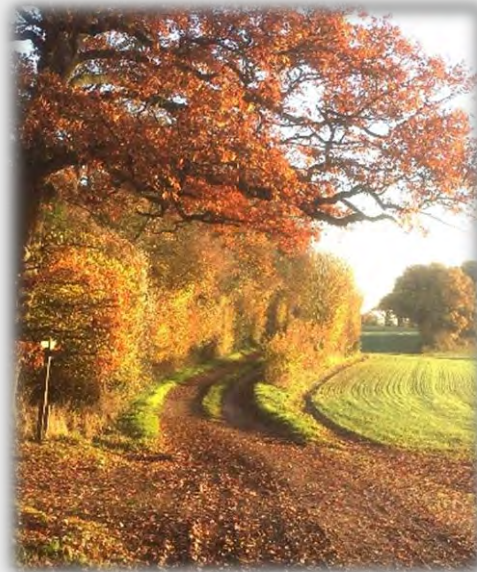
Friday 8th November, 2024 at 7.30pm

Doors open at 6.45pm

St Peter's Church, Stockbridge

LONGPARISH

- 2 7.30pm - FOLS AGM - School/Community Hall
 6 10.30am - Harvest Festival Service - St. Nicholas Church
 6 12 Noon - Harvest Lunch - Village Hall
 10 10 to 11.45am - Coffee Morning - The Plough
 11 9.15am - Walk and Litter Pick - Village Hall
 13 9am - L2SOTM Race - The Plough
 14 7.30pm - Parish Council Meeting - Village Hall
 19 9.30am - Autumn Village Tidy Up - Playground
 25 12 Noon to 2pm - LCA Lunch Club - Village Hall
 26 2pm - Annual Pumpkin Show - School/Community Hall
 29 7pm - Garden Club - Village Hall



Front cover photo: Neil Pyle

HURSTBOURNE PRIORS

- 10 10.15am to 12 Noon - Coffee Morning, no.3 Apsley Cottages
 13 11am - Harvest Festival, St Andrew's Church
 13 12.30pm - Harvest Lunch, Mistletoe Cottage

Hurstbourne Priors Village Hall: Mrs Helen Ford, ☎ 07789 691018, e: helenford62@hotmail.co.uk

Longparish Village Hall: Mrs Maggie Barber, ☎ 01264 720459, e: villagehall@longparish.org.uk

Longparish Community Hall: During school open hours, Mrs Christine Leach ☎ 01264 720317

St Mary Bourne Village Centre: Miss Angela Cook, ☎ 01264 738158, e: smbvillagecentre@btinternet.com

Copy date for the November Hill & Valley edition: Wednesday 16th October 2024

Your contributions - letters, pictures, comments or articles are always welcome. Contact your parish editor by the copy date.
 Please provide copy in Word format and attached images as jpg files.

Printed by The Andover Printing Company Ltd ☎ 01264 334220 www.andoverprinting.co.uk © Hill & Valley Parish Magazine 2024

Parish Editors

Hurstbourne Priors: Elise Williams

☎ 01256 892081 - hillandvalleyhbp@gmail.com

Longparish: Angie Curtis

☎ 07572 753512 - hillandvalley@longparish.org.uk

St Mary Bourne & Woodcott: Nigel Dickinson

☎ 01264 738206 - nigeld24@gmail.com

Editorial: Tom Bremridge, Longparish ☎ 01264 720 540

Michael Widén, St Mary Bourne ☎ 01264 738 250

Production/Distribution: Tom Bremridge, Longparish

☎ 01264 720 540 - tbremridge@gmail.com

Michael Widén, St Mary Bourne

☎ 01264 738 250 - hillandvalley@btinternet.com

Websites

* Hill & Valley pages on-line

Hurstbourne Priors:

Parish Council: www.hurstbournepriorsparishcouncil.org.uk *

Longparish:

Parish Council: www.longparish.org.uk *

St Mary Bourne:

Parish Council: www.stmarybourne-pc.gov.uk *

Village Centre: www.stmarybourne.co.uk

Community Hub: www.stmarybourne.org *

Village Scrap Book:

Jeanette Davies, daviessmb@aol.com, ☎ 07553 044330

Advertising

Emma Palmer, Longparish

☎ 07881 923150 - hillandvalley@longparish.com